

MI Preprint Series

Kyushu University
The Global COE Program
Math-for-Industry Education & Research Hub

Decay estimates on solutions of the linearized compressible Navier-Stokes equation around a Poiseuille type flow

Yoshiyuki Kagei, Yu Nagafuchi
& Takeshi Sudou

MI 2010-12

(Received March 4, 2010)

Faculty of Mathematics
Kyushu University
Fukuoka, JAPAN

Decay estimates on solutions of the linearized compressible Navier-Stokes equation around a Poiseuille type flow

Yoshiyuki Kagei ^{*} Yu Nagafuchi [†] Takeshi Sudou [‡]

Abstract

Decay estimates on solutions to the linearized compressible Navier-Stokes equation around a Poiseuille type flow are established. It is shown that if the Reynolds and Mach numbers are sufficiently small, solutions of the linearized problem decay in L^2 norm as $n - 1$ dimensional heat kernel. Furthermore, it is proved that the asymptotic leading part of solutions is given by solutions of an $n - 1$ dimensional linear heat equation with a convective term.

Mathematics Subject Classification (2000). 35Q30, 76N15.

Keywords. Compressible Navier-Stokes equation, decay estimates, asymptotic behavior, Poiseuille type flow.

1. Introduction

This paper is concerned with the asymptotic behavior of solutions to the compressible Navier-Stokes equation around a Poiseuille type flow.

We consider the system of equations

$$(1.1) \quad \partial_t \rho + \operatorname{div}(\rho v) = 0,$$

$$(1.2) \quad \rho(\partial_t v + v \cdot \nabla v) - \mu \Delta v - (\mu + \mu') \nabla \operatorname{div} v + \nabla P(\rho) = g \rho \mathbf{f}_\alpha$$

in an n dimensional infinite layer $\Omega_\ell = \mathbf{R}^{n-1} \times (0, \ell)$:

$$\Omega_\ell = \{x = (x', x_n);$$

$$x' = (x_1, \dots, x_{n-1}) \in \mathbf{R}^{n-1}, 0 < x_n < \ell\}.$$

^{*}Faculty of Mathematics, Kyushu University, Fukuoka 819-0395, JAPAN

[†]Graduate School of Mathematics, Kyushu University, Fukuoka 819-0395, JAPAN

[‡]NIKKEN-SOGYO CO.,LTD., Ota-ku, Nishikamata 7-23-3, Tokyo 144-0051, JAPAN

Here $n \geq 2$; $\rho = \rho(x, t)$ and $v = (v^1(x, t), \dots, v^n(x, t))$ denote the unknown density and velocity at time $t \geq 0$ and position $x \in \Omega_\ell$, respectively; $P(\rho) = K\rho^a$ is the pressure, where $K > 0$ and $a > 1$ are constants; μ and μ' are the viscosity coefficients that are assumed to be constants satisfying $\mu > 0$, $\frac{2}{n}\mu + \mu' \geq 0$; g is the gravity constant; and \mathbf{f}_α is an external force of the form $\mathbf{f}_\alpha = (\sin \alpha, 0, \dots, 0, -\cos \alpha)$ with a constant α .

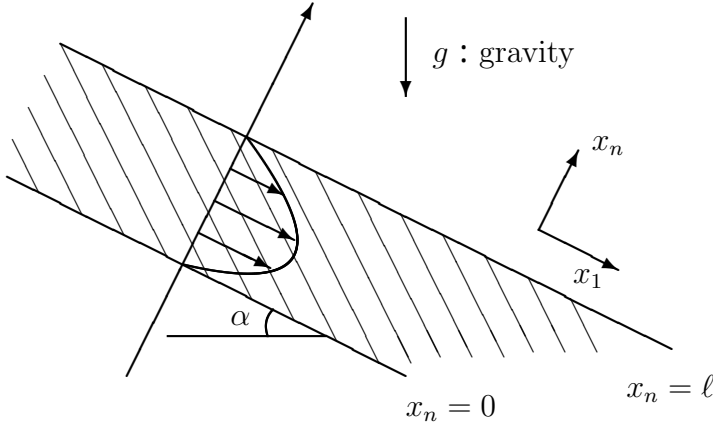
The system (1.1)–(1.2) is considered under the boundary condition

$$(1.3) \quad v|_{x_n=0, \ell} = 0.$$

It is not difficult to see that the problem (1.1)–(1.3) has the stationary solution $\bar{u}_s = (\bar{\rho}_s, \bar{v}_s)$:

$$\begin{aligned} \bar{\rho}_s &= \bar{\rho}_s(x_n) = \left(\rho_*^{a-1} + \frac{(a-1)g \cos \alpha}{aK} (\ell - x_n) \right)^{\frac{1}{a-1}}, \\ \bar{v}_s &= (\bar{v}_s^1(x_n), 0, \dots, 0), \\ \bar{v}_s^1(x_n) &= \frac{g \sin \alpha}{\mu} \int_0^\ell G_\ell(x_n, y_n) \bar{\rho}_s(y_n) dy_n, \\ G_\ell(x_n, y_n) &= \begin{cases} \frac{1}{\ell}(\ell - x_n)y_n & (0 < y_n < x_n) \\ \frac{1}{\ell}x_n(\ell - y_n) & (x_n < y_n < \ell). \end{cases} \end{aligned}$$

Here ρ_* is a given positive constant. See the figure below.



We are interested in the large time behavior of solutions to problem (1.1)–(1.3) when the initial value (ρ_0, v_0) is sufficiently close to the stationary solution $\bar{u}_s = (\bar{\rho}_s, \bar{v}_s)$.

The stability problem of flows in an infinite layer or cylindrical domains has been widely studied as a good subject to study pattern formation phenomena and turbulent flows. Basic analysis with mathematical rigor has

been well established for incompressible flows in these domains. For example, one can systematically analyze qualitative properties of solutions of the governing equations such as the stability and bifurcation, since the incompressible Navier-Stokes equation can be treated in a category of semilinear parabolic equations (e.g., [1, 2, 3, 4, 5, 6, 17, 23, 24]). On the other hand, it seems that there has been not so much mathematically rigorous analysis for compressible flows in these domains. This is because the governing equations for compressible flows are hyperbolic-parabolic systems of quasilinear equations; and, thus, the extension of the analysis for the incompressible case to the compressible one is not straightforward. As a first step of the mathematical analysis for compressible flows, we have begun to investigate the dynamics around simple flows such as the motionless state and parallel flows. The stability of the motionless state was investigated in [8, 9, 10] and it was shown that the motionless state is stable for sufficiently small initial disturbances and the disturbances behave in large time as solutions of an $n - 1$ dimensional linear heat equation. A similar result also holds for the case of cylindrical domains ([13]). As for parallel flows, it was proved in [11] that the plane Couette flow is asymptotically stable for sufficiently small initial disturbances if the Reynolds number and Mach number are sufficiently small. Furthermore, the disturbances behave in large time as solutions of an $n - 1$ dimensional linear heat equation with a convective term. This kind of diffusive behavior is different from the case of unbounded domains such as the whole space, half space and exterior domains, where hyperbolic aspect of the system also appears in the asymptotic leading part of solutions in large time (e.g., [7, 12, 15, 16, 18, 19, 20, 21]).

Our next step is to extend the analysis of the plane Couette flow to the case of a Poiseuille type flow. In this paper we will consider the linearized problem around such a flow and establish decay estimates on solutions similar to those in the case of the plane Couette flow. Based on the analysis in this paper, the nonlinear problem will be treated elsewhere.

Our main results of this paper are summarized as follows. A non-dimensional form of the linearized system is written as

$$(1.4) \quad \partial_t u + Lu = 0$$

on the domain $\Omega = \mathbf{R}^{n-1} \times (0, 1)$:

$$\Omega = \{x = (x', x_n);$$

$$x' = (x_1, \dots, x_{n-1}) \in \mathbf{R}^{n-1}, 0 < x_n < 1\}$$

under the initial and boundary conditions

$$(1.5) \quad u|_{t=0} = u_0, \quad w|_{x_n=0,1} = 0.$$

Here $u = {}^T(\phi, w)$ and

$$L = \begin{pmatrix} v_s^1 \partial_{x_1} & \gamma^2 \operatorname{div}(\rho_s \cdot) \\ \nabla \left(\frac{\tilde{P}'(\rho_s)}{\gamma^2 \rho_s} \cdot \right) & -\frac{\nu}{\rho_s} \Delta I_n - \frac{(\nu + \nu')}{\rho_s} \nabla \operatorname{div} \end{pmatrix} \\ + \begin{pmatrix} 0 & 0 \\ -\frac{\nu}{\gamma^2 \rho_s} \mathbf{e}_1 & v_s^1 \partial_{x_1} I_n + (\partial_{x_n} v_s^1) \mathbf{e}_1 {}^T \mathbf{e}_n \end{pmatrix},$$

where ρ_s , v_s^1 and $\tilde{P}'(\rho_s)$ are the non-dimensional form of $\bar{\rho}_s$, \bar{v}_s^1 and $P'(\bar{\rho}_s)$ respectively; I_n denotes the $n \times n$ identity matrix; \mathbf{e}_j denotes the unit vector in x_j direction; $\mathbf{e}_1 {}^T \mathbf{e}_n$ is the matrix with (i, j) components given by $\delta_{i1} \delta_{nj}$; ν , ν' and γ^2 are some positive constants. Here and in what follows the superscript T means transposition. The Reynolds number Re and Mach number Ma are given by $Re = 1/\nu = \mu/(\rho_* \ell V)$ and $Ma = 1/\gamma = V/\sqrt{P'(\rho_*)}$, respectively, with $V = (\rho_* g \ell^2 \sin \alpha)/\mu$. We also introduce the parameter $\omega = ((a - 1)g \ell \cos \alpha)/(a \rho_*^{a-1} K)$. We will prove that there exist positive numbers $Re_0 > 0$, $Ma_0 > 0$ and $\omega_0 > 0$ such that if $Re \leq Re_0$, $Ma \leq Ma_0$ and $|\omega| \leq \omega_0$, then the solution $u(t) = (\phi(t), w(t))$ of the linearized problem (1.4)–(1.5) satisfies

$$(1.6) \quad \begin{aligned} & \|\partial_{x'}^k \partial_{x_n}^l u(t)\|_2 \\ & \leq C \{ t^{-\frac{n-1}{4} - \frac{k}{2}} \|u_0\|_{L^1} + e^{-dt} (\|u_0\|_{H^1 \times L^2} + \|\partial_{x'} w_0\|_{L^2}) \} \end{aligned}$$

for $t \geq 1$, $k + l \leq 1$, and

$$(1.7) \quad \begin{aligned} & \|u(t) - G_t *_{x'} \Pi^{(0)} u_0\|_{L^2} \\ & \leq C \{ t^{-\frac{n-1}{4} - \frac{1}{2}} \|u_0\|_{L^1} + e^{-dt} (\|u_0\|_{H^1 \times L^2} + \|\partial_{x'} w_0\|_{L^2}) \} \end{aligned}$$

for $t \geq 1$ with a function $G_t *_{x'} \Pi^{(0)} u_0$ whose Fourier transform in x' is given by

$$\mathcal{F} (G_t *_{x'} \Pi^{(0)} u_0) = e^{-(i\kappa_0 \xi_1 + \kappa_1 \xi_1^2 + \kappa_2 |\xi''|^2)t} [\widehat{\phi}_0(\xi')] u^{(0)}.$$

Here $\xi' = (\xi_1, \xi'') \in \mathbf{R}^{n-1}$, $\xi'' = (\xi_2, \dots, \xi_{n-1}) \in \mathbf{R}^{n-2}$; $u^{(0)}$ is a function of x_n only;

$$[\widehat{\phi}_0(\xi')] = \int_0^1 \widehat{\phi}_0(\xi', x_n) dx_n;$$

$\widehat{\phi}_0$ is the Fourier transform of ϕ_0 in x' ; and κ_j ($j = 0, 1, 2$) are positive constants depending on ρ_* , ℓ , V , μ , μ' and $P'(\rho_*)$. Precise statements of the results will be given in section 3.

As in the case of the plane Couette flow [11], these decay estimates will be useful for the nonlinear problem. In contrast to the case of the plane Couette flow, besides the decay estimates themselves, a decomposition argument in the proof will also play an important role in the study of the nonlinear problem.

To obtain the decay estimates, as in [11], we consider the Fourier transform of (1.4) in $x' \in \mathbf{R}^{n-1}$:

$$\partial_t \widehat{u} + \widehat{L}_{\xi'} \widehat{u} = 0, \quad \widehat{u}|_{t=0} = \widehat{u}_0,$$

where $\xi' = (\xi_1, \dots, \xi_{n-1}) \in \mathbf{R}^{n-1}$ denotes the dual variable.

The operator $\widehat{L}_{\xi'}$ has different characters between the cases $|\xi'| \ll 1$ and $|\xi'| \gg 1$. We thus decompose the semigroup e^{-tL} associated with (1.4) into two parts: $e^{-tL} = \mathcal{F}^{-1}(e^{-t\widehat{L}_{\xi'}}|_{|\xi'| \leq R}) + \mathcal{F}^{-1}(e^{-t\widehat{L}_{\xi'}}|_{|\xi'| \geq R})$ for some $R > 0$, where \mathcal{F}^{-1} denotes the inverse Fourier transform. To analyze the high frequency part $|\xi'| \geq R$, we employ the Fourier transformed version of Matsumura-Nishida's energy method and derive the exponential decay property of the corresponding part of the semigroup e^{-tL} . This can be done exactly in the same way as in [11]. To investigate the part of bounded frequencies $|\xi'| \leq R$, we make use of a certain decomposition of the corresponding part of the semigroup based on the spectrum of the operator of the zero frequency $\xi' = 0$. Concerning this part we need more precise argument than that in [11]. The decomposition argument for the bounded frequency part will be also useful in the study of the nonlinear problem. Once the necessary estimates for the bounded frequency part are obtained, then the asymptotic behavior (1.7) follows from the analysis of the low frequency part $|\xi'| \ll 1$ in a similar manner to that in [11].

This paper is organized as follows. In section 2 we rewrite the problem into the system of equations for the disturbance in a non-dimensional form. Our main results in this paper are then stated in section 3. In section 4 we prove the decay estimates, and, in the proof, we employ a certain decomposition argument for the bounded frequency part. A proof of the asymptotic behavior (1.7) is then outlined in section 5.

2. Stationary Solution and Reformulation of the Problem

In this section we rewrite the problem into the one for the disturbance in a non-dimensional form.

Let ρ_* be a given positive number. We will look for a stationary flow whose density $\bar{\rho}_s$ satisfies

$$(2.1) \quad \bar{\rho}_s|_{x_n=\ell} = \rho_*.$$

With this in mind we introduce the following dimensionless variables:

$$x = \tilde{x}, \quad t = \frac{\ell}{V} \tilde{t}, \quad v = V \tilde{v}, \quad \rho = \rho_* \tilde{\rho}, \quad P = \rho_* V^2 \tilde{P}$$

with

$$V = \frac{\rho_* g \ell^2 \sin \alpha}{\mu}.$$

Then the problem (1.1)–(1.3) is transformed into the following dimensionless problem on the layer $\Omega = \mathbf{R}^{n-1} \times (0, 1)$:

$$(2.2) \quad \partial_t \tilde{\rho} + \operatorname{div}(\tilde{\rho} \tilde{v}) = 0,$$

$$(2.3) \quad \tilde{\rho}(\partial_t \tilde{v} + \tilde{v} \cdot \nabla \tilde{v}) - \nu \Delta \tilde{v} - (\nu + \nu') \nabla \operatorname{div} \tilde{v} + \tilde{P}'(\tilde{\rho}) \nabla \tilde{\rho} = \beta \rho \mathbf{f}_\alpha$$

$$(2.4) \quad \tilde{v}|_{x_n=0,1} = 0.$$

Here ν , ν' and β are the non-dimensional parameters:

$$\nu = \frac{\mu}{\rho_* \ell V}, \quad \nu' = \frac{\mu'}{\rho_* \ell V}, \quad \beta = \frac{\sqrt{g \ell}}{V}.$$

We also introduce a parameter γ :

$$\gamma = \sqrt{\tilde{P}'(1)} = \frac{\sqrt{P'(\rho_*)}}{V}$$

and a parameter ω :

$$\omega = \frac{(a-1)g\ell \cos \alpha}{a\rho_*^{a-1}K}.$$

We state the existence of a stationary solution of Poiseuille type flow.

Proposition 2.1. *Assume that ω satisfies $\omega > -1$. Then problem (2.2)–(2.4) has a smooth stationary solution $u_s = (\rho_s, v_s)$ of the form:*

$$\begin{aligned} \rho_s(x_n) &= (1 + \omega(1 - x_n))^{\frac{1}{a-1}}, \\ v_s(x) &= (v_s^1(x_n), 0, \dots, 0), \\ v_s^1(x_n) &= \int_0^1 G(x_n, y_n) \rho_s(y_n) dy_n. \end{aligned}$$

Here

$$G(x_n, y_n) = \begin{cases} (1 - x_n)y_n & (0 < y_n < x_n) \\ x_n(1 - y_n) & (x_n < y_n < 1). \end{cases}$$

Furthermore, $u_s = (\rho_s, v_s)$ satisfies the following estimates:

$$\begin{aligned}\rho_s(x_n) &\geq (1 + \min\{0, \omega\})^{\frac{1}{\alpha-1}} > 0, \\ \rho_s(x_n) &= 1 + O(\omega), \quad |\partial_{x_n}^k \rho_s(x_n)| \leq C_k |\omega|^k, \\ v_s^1(x_n) &= \frac{1}{2} x_n (1 - x_n) + O(\omega), \quad |\partial_{x_n} v_s^1(x_n)| \leq C, \\ \tilde{P}'(\rho_s(x_n)) &= \gamma^2 (1 + O(\omega)), \quad |\partial_{x_n}^k \tilde{P}'(\rho_s(x_n))| \leq C_k |\omega|^k,\end{aligned}$$

uniformly in $x_n \in [0, 1]$.

Proof. In view of (2.1) we look for a stationary solution of the form

$$\rho_s = \rho_s(x_n), \quad v_s = (v_s^1(x_n), 0, \dots, 0), \quad \rho_s(1) = 1.$$

Then we see that (ρ_s, v_s^1) is a solution of

$$(2.5) \quad -\nu \partial_{x_n}^2 v_s^1 = \beta^2 \rho_s \sin \alpha, \quad v_s^1|_{x_n=0,1} = 0,$$

$$(2.6) \quad \tilde{P}'(\rho_s) \partial_{x_n} \rho_s = -\beta^2 \rho_s \cos \alpha.$$

It is easy to integrate (2.6). By using $\rho_s(1) = 1$, we obtain the desired ρ_s , and, then, v_s is obtained by inverting (2.5). It is straightforward to obtain the estimates on ρ_s and v_s . Furthermore, by noting $\tilde{P}'(1) = \gamma^2$, we have the desired estimates on $\tilde{P}'(\rho_s)$. This completes the proof. \square

Remark. We note that the Reynolds number Re and Mach number Ma is given by $Re = \nu^{-1}$ and $Ma = \gamma^{-1}$, respectively.

Setting $\tilde{\rho} = \rho_s + \gamma^{-2} \phi$ with $\gamma = Ma^{-1}$ and $\tilde{v} = v_s + w$ in (2.2)–(2.4), we arrive at the initial boundary value problem for the disturbance $u = (\phi, w)$:

$$(2.7) \quad \partial_t \phi + v_s^1 \partial_{x_1} \phi + \gamma^2 \operatorname{div}(\rho_s w) = f^0(\phi, w),$$

$$(2.8) \quad \begin{aligned}\partial_t w - \frac{\nu}{\rho_s} \Delta w - \frac{(\nu + \nu')}{\rho_s} \nabla \operatorname{div} w + \nabla \left(\frac{\tilde{P}'(\rho_s)}{\gamma^2 \rho_s} \phi \right) \\ + v_s^1 \partial_{x_1} w + (\partial_{x_n} v_s^1) w^n \mathbf{e}_1 - \frac{\nu}{\gamma^2 \rho_s} \phi \mathbf{e}_1 = \mathbf{g}(\phi, w),\end{aligned}$$

$$(2.9) \quad w|_{x_n=0,1} = 0,$$

$$(2.10) \quad (\phi, w)|_{t=0} = (\phi_0, w_0).$$

Here

$$\begin{aligned}
f^0(\phi, w) &= -\operatorname{div}(\phi w), \\
\mathbf{g}(\phi, w) &= -w \cdot \nabla w + \frac{\nu\phi}{(\gamma^2\rho_s + \phi)\rho_s} \left\{ -\Delta w + \frac{\phi}{\gamma^2\rho_s} \Delta v_s \right\} \\
&\quad - \frac{(\nu + \nu')\phi}{(\gamma^2\rho_s + \phi)\rho_s} \nabla \operatorname{div} w + \frac{\gamma^2}{(\gamma^2\rho_s + \phi)} \left\{ \frac{\phi}{\gamma^2\rho_s} \nabla \left(\frac{\tilde{P}'(\rho_s)}{\gamma^2\rho_s} \phi \right) \right. \\
&\quad \left. - \nabla \left(\gamma^{-4} \phi^2 \tilde{P}_2(\gamma^{-2}\phi, \rho_s) \right) \right\}
\end{aligned}$$

with

$$\tilde{P}_2(\phi, \rho_s) = \int_0^1 (1 - \theta) \tilde{P}''(\rho_s + \theta\phi) d\theta.$$

3. Main Results

Our main concern in this paper is the estimates of solutions to the linearized problem, i.e., problem (2.7)–(2.10) with $f^0(\phi, w) = 0$ and $\mathbf{g}(\phi, w) = 0$.

We first introduce some notation which will be used throughout the paper. For a domain D and $1 \leq p \leq \infty$ we denote by $L^p(D)$ the usual Lebesgue space on D and its norm is denoted by $\|\cdot\|_{L^p(D)}$. Let m be a nonnegative integer. $W^{m,p}(D)$ denotes the l th order L^p Sobolev space on D with norm $\|\cdot\|_{W^{m,p}(D)}$. When $p = 2$, the space $W^{m,2}(D)$ is denoted by $H^m(D)$ and its norm is denoted by $\|\cdot\|_{H^m(D)}$. $C_0^m(D)$ stands for the set of all C^m functions which have compact support in D . We denote by $W_0^{1,p}(D)$ the completion of $C_0^1(D)$ in $W^{1,p}(D)$. In particular, $W_0^{1,2}(D)$ is denoted by $H_0^1(D)$.

We simply denote by $L^p(D)$ (resp., $W^{m,p}(D)$, $H^m(D)$) the set of all vector fields $w = {}^T(w^1, \dots, w^n)$ on D with $w^j \in L^p(D)$ (resp., $W^{m,p}(D)$, $H^m(D)$), $j = 1, \dots, n$, and its norm is also denoted by $\|\cdot\|_{L^p(D)}$ (resp., $\|\cdot\|_{W^{m,p}(D)}$, $\|\cdot\|_{H^m(D)}$). For $u = {}^T(\phi, w)$ with $\phi \in W^{k,p}(D)$ and $w = {}^T(w^1, \dots, w^n) \in W^{m,q}(D)$, we define $\|u\|_{W^{k,p}(D) \times W^{m,q}(D)}$ by $\|u\|_{W^{k,p}(D) \times W^{m,q}(D)} = \|\phi\|_{W^{k,p}(D)} + \|w\|_{W^{m,q}(D)}$. When $k = m$ and $p = q$, we simply write $\|u\|_{W^{k,p}(D) \times W^{k,p}(D)} = \|u\|_{W^{k,p}(D)}$.

In case $D = \Omega$ we abbreviate $L^p(\Omega)$ (resp., $W^{l,p}(\Omega)$, $H^l(\Omega)$) as L^p (resp., $W^{l,p}$, H^l). In particular, the norm $\|\cdot\|_{L^p(\Omega)} = \|\cdot\|_{L^p}$ is denoted by $\|\cdot\|_p$.

In case $D = (0, 1)$ we denote the norm of $L^p(0, 1)$ by $|\cdot|_p$. The inner product of $L^2(0, 1)$ is denoted by

$$(f, g) = \int_0^1 f(x_n) \overline{g(x_n)} dx_n, \quad f, g \in L^2(0, 1).$$

Here \bar{g} denotes the complex conjugate of g . For $u_j = {}^T(\phi_j, w_j) \in L^2(0, 1)$ with $w_j = {}^T(w_j^1, \dots, w_j^n)$ ($j = 1, 2$), we also define a weighted inner product $\langle u_1, u_2 \rangle$ by

$$\langle u_1, u_2 \rangle = \int_0^1 \phi_1 \bar{\phi}_2 \frac{\tilde{P}'(\rho_s)}{\gamma^2 \rho_s} dx_n + \int_0^1 w_1 \bar{w}_2 \rho_s dx_n.$$

Furthermore, for $f \in L^1(0, 1)$ we denote the mean value of f in $(0, 1)$ by $[f]$:

$$[f] = (f, 1) = \int_0^1 f(x_n) dx_n.$$

For $u = {}^T(\phi, w) \in L^1(0, 1)$ with $w = {}^T(w^1, \dots, w^n)$ we define $[u]$ by

$$[u] = [\phi] + [w^1] + \dots + [w^n].$$

The norms of $W^{m,p}(0, 1)$ and $H^m(0, 1)$ are denoted by $|\cdot|_{W^{m,p}}$ and $|\cdot|_{H^m}$, respectively.

We often write $x \in \Omega$ as

$$x = {}^T(x', x_n), \quad x' = {}^T(x_1, \dots, x_{n-1}) \in \mathbf{R}^{n-1}.$$

Partial derivatives of a function u in x , x' , x_n and t are denoted by $\partial_x u$, $\partial_{x'} u$, $\partial_{x_n} u$ and $\partial_t u$, respectively. We also write higher order partial derivatives of u in x as $\partial_x^k u = (\partial_x^\alpha u; |\alpha| = k)$.

We denote the $k \times k$ identity matrix by I_k . In particular, when $k = n + 1$, we simply write I for I_{n+1} . We also define $(n + 1) \times (n + 1)$ diagonal matrices Q_0 , Q_n and \tilde{Q} by

$$Q_0 = \text{diag}(1, 0, \dots, 0), \quad Q_n = \text{diag}(0, \dots, 0, 1)$$

and

$$\tilde{Q} = \text{diag}(0, 1, \dots, 1).$$

We then have, for $u = {}^T(\phi, w) \in \mathbf{R}^{n+1}$, $w = {}^T(w^1, \dots, w^n)$,

$$Q_0 u = \begin{pmatrix} \phi \\ 0 \end{pmatrix}, \quad Q_n u = \begin{pmatrix} 0 \\ 0 \\ w^n \end{pmatrix}, \quad \tilde{Q} u = \begin{pmatrix} 0 \\ w \end{pmatrix}.$$

We note that

$$[Q_0 u] = [\phi] \quad \text{for } u = {}^T(\phi, w).$$

We next introduce some notation about integral operators. For a function $f = f(x')$ ($x' \in \mathbf{R}^{n-1}$), we denote its Fourier transform by \widehat{f} or $\mathcal{F}f$:

$$\widehat{f}(\xi') = (\mathcal{F}f)(\xi') = \int_{\mathbf{R}^{n-1}} f(x') e^{-i\xi' \cdot x'} dx'.$$

The inverse Fourier transform is denoted by \mathcal{F}^{-1} :

$$(\mathcal{F}^{-1}f)(x) = (2\pi)^{-(n-1)} \int_{\mathbf{R}^{n-1}} f(\xi') e^{i\xi' \cdot x'} d\xi'.$$

For a function $K(x_n, y_n)$ on $(0, 1) \times (0, 1)$ we will denote by Kf the integral operator $\int_0^1 K(x_n, y_n) f(y_n) dy_n$.

We will denote the resolvent set of a closed operator A by $\rho(A)$ and the spectrum of A by $\sigma(A)$. For $\Lambda \in \mathbf{R}$ and $\theta \in (\frac{\pi}{2}, \pi)$ we denote the set $\{\lambda \in \mathbf{C}; |\arg(\lambda - \Lambda)| \leq \theta\}$ by $\Sigma(\Lambda, \theta)$:

$$\Sigma(\Lambda, \theta) = \{\lambda \in \mathbf{C}; |\arg(\lambda - \Lambda)| \leq \theta\}.$$

We now state our main results.

Let us consider the linearized problem

$$(3.1) \quad \partial_t u + Lu = 0, \quad w|_{x_n=0,1} = 0, \quad u|_{t=0} = u_0.$$

Here $u = {}^T(\phi, w)$ and L is the operator of the form

$$L = \begin{pmatrix} v_s^1 \partial_{x_1} & \gamma^2 \operatorname{div}(\rho_s \cdot) \\ \nabla \left(\frac{\tilde{P}'(\rho_s)}{\gamma^2 \rho_s} \cdot \right) & -\frac{\nu}{\rho_s} \Delta I_n - \frac{(\nu + \nu')}{\rho_s} \nabla \operatorname{div} \end{pmatrix} \\ + \begin{pmatrix} 0 & 0 \\ -\frac{\nu}{\gamma^2 \rho_s} \mathbf{e}_1 & v_s^1 \partial_{x_1} I_n + (\partial_{x_n} v_s^1) \mathbf{e}_1 {}^T \mathbf{e}_n \end{pmatrix}.$$

We denote the solution operator for (3.1) by $\mathcal{U}(t)$.

Theorem 3.1. *Suppose that $u_0 = {}^T(\phi_0, w_0) \in H^1 \times L^2$ and that $\partial_{x'} w_0 \in L^2$. Then (3.1) has a unique solution $u(t) = \mathcal{U}(t)u_0$ and satisfies the estimates*

$$\|\partial_x^k \mathcal{U}(t)u_0\|_2 \leq C \{t^{-\frac{k}{2}} \|u_0\|_{H^k \times L^2} + \|\partial_{x'} w_0\|_2\} \quad (k = 0, 1)$$

for $0 < t \leq 1$.

Theorem 3.1 can be proved exactly in the same way as in [11]. We omit the proof.

As for the estimates in large time, we have the following result.

Theorem 3.2. *There exist constants $\nu_0 > 0$, $\gamma_0 > 0$ and ω_0 such that if $\nu \geq \nu_0$, $(2\nu + \nu')/\gamma^2 \leq 1/\gamma_0^2$ and $|\omega| \leq \omega_0$, then the estimates*

$$\begin{aligned} & \|\partial_{x'}^k \partial_{x_n}^l \mathcal{U}(t)u_0\|_2 \\ & \leq C \left\{ t^{-\frac{n-1}{4} - \frac{k}{2}} \|u_0\|_{L^1(\mathbf{R}^{n-1}; L^2(0,1))} \right. \\ & \quad \left. + e^{-dt} (\|u_0\|_{H^1 \times L^2} + \|\partial_{x'} w_0\|_2) \right\} \quad (k + l \leq 1) \end{aligned}$$

hold uniformly for $t \geq 1$, $u_0 = {}^T(\phi_0, w_0) \in H^1 \times L^2$ with $\partial_{x'} w_0 \in L^2$ and $u_0 \in L^1(\mathbf{R}^{n-1}; L^2(0,1))$. Here d is a positive constant.

We will prove Theorem 3.2 in section 4.

The decay rate in Theorem 3.2 is the same one as that of an $n - 1$ dimensional heat kernel. The next result shows that this is an optimal decay rate, and, in fact, the asymptotic leading part of solutions is given by an $n - 1$ dimensional heat kernel which moves in x_1 direction with a constant speed.

Theorem 3.3. *There exist constants $\nu_0 > 0$, $\gamma_0 > 0$ and ω_0 such that if $\nu \geq \nu_0$, $(2\nu + \nu')/\gamma^2 \leq 1/\gamma_0^2$ and $|\omega| \leq \omega_0$, then for any $u_0 = {}^T(\phi_0, w_0) \in (H^1 \times L^2) \cap L^1$ with $\partial_{x'} w_0 \in L^2$ the solution $u(t) = \mathcal{U}(t)u_0$ of problem (3.1) is decomposed as*

$$\mathcal{U}(t)u_0 = \mathcal{U}^{(0)}(t)u_0 + \mathcal{U}^{(\infty)}(t)u_0,$$

where each term on the right-hand side has the following properties.

(i) *The function $\mathcal{U}^{(0)}(t)u_0$ satisfies the following estimates (3.2) and (3.3) uniformly for $t \geq 1$:*

$$(3.2) \quad \|\partial_{x'}^k \mathcal{U}^{(0)}(t)u_0\|_2 \leq C t^{-\frac{n-1}{4} - \frac{k}{2}} \|u_0\|_1 \quad (k = 0, 1),$$

$$(3.3) \quad \|\mathcal{U}^{(0)}(t)u_0 - G_t *_{x'} \Pi^{(0)}u_0\|_2 \leq C t^{-\frac{n-1}{4} - \frac{1}{2}} \|u_0\|_1,$$

Here

$$G_t *_{x'} \Pi^{(0)}u_0 = \mathcal{F}^{-1} \left(e^{-(i\kappa_0 \xi_1 + \kappa_1 \xi_1^2 + \kappa_2 |\xi''|^2)t} \widehat{\Pi}^{(0)} \widehat{u}_0 \right)$$

with $\widehat{\Pi}^{(0)} \widehat{u}_0 = [Q_0 \widehat{u}_0]u^{(0)} = [\widehat{\phi}_0]u^{(0)}$, where $u^{(0)} = u^{(0)}(x_n)$ is the function given in Lemma 4.3 below; and κ_j ($j = 0, 1, 2$) are some positive constants satisfying

$$\kappa_0 = \frac{1}{6} + O(\omega),$$

$$\kappa_1 = \left(\frac{\gamma^2}{12\nu} + O\left(\frac{1}{\nu}\right) + O\left(\frac{2\nu+\tilde{\nu}}{\gamma^2}\right) \right) (1 + O(\omega)),$$

$$\kappa_2 = \frac{\gamma^2}{12\nu} (1 + O(\omega)).$$

Furthermore, if $u_0 = {}^T(\operatorname{div} \Psi_0, \partial_x w_0)$ with $\Psi_0^n|_{x_n=0,1} = 0$ then it holds that

$$(3.4) \quad \|\mathcal{U}^{(0)}(t)u_0\|_2 \leq Ct^{-\frac{n-1}{4}-\frac{1}{2}}(\|\Psi_0\|_1 + \|w_0\|_1)$$

for all $t \geq 1$.

(ii) There exists a constant $d > 0$ such that $\mathcal{U}^{(\infty)}(t)u_0$ satisfies

$$(3.5) \quad \|\partial_x^l \mathcal{U}^{(\infty)}(t)u_0\|_2 \leq Ce^{-dt}(\|u_0\|_{H^1 \times L^2} + \|\partial_{x'} w_0\|_2) \quad (l = 0, 1)$$

for all $t \geq 1$.

Remark. We easily see that $\|G_t *_{x'} \Pi^{(0)}u_0\|_2 = O(t^{-\frac{n-1}{4}})$ if $u_0 \in L^1$. We also see that the function $G_t *_{x'} \Pi^{(0)}u_0$ is written in the form $G_t *_{x'} \Pi^{(0)}u_0 = (\phi^{(0)}(x', t), 0)$ with $\phi^{(0)}(x', t)$ satisfying

$$\partial_t \phi^{(0)} - \kappa_1 \partial_{x_1}^2 \phi^{(0)} - \kappa_2 \Delta'' \phi^{(0)} + \kappa_0 \partial_{x_1} \phi^{(0)} = 0,$$

$$\phi^{(0)}|_{t=0} = \int_0^1 \phi_0(x', x_n) dx_n,$$

where $\Delta'' = \partial_{x_2}^2 + \dots + \partial_{x_{n-1}}^2$.

A proof of Theorem 3.3 will be outlined in section 5.

4. Proof of Theorem 3.2

In this section we prove Theorem 3.2. From now on we simply denote $\nu + \nu'$ by $\tilde{\nu}$:

$$\tilde{\nu} = \nu + \nu'.$$

To prove Theorem 3.2, we consider the Fourier transform of (3.1) in x' variable. The Fourier transform of (3.1) is written as

$$(4.1) \quad \partial_t \widehat{\phi} + i\xi_1 v_s^1 \widehat{\phi} + i\gamma^2 \xi' \cdot (\rho_s \widehat{w}') + \gamma^2 \partial_{x_n} (\rho_s \widehat{w}^n) = 0,$$

$$(4.2) \quad \begin{aligned} \partial_t \widehat{w}' + \nu(|\xi'|^2 - \partial_{x_n}^2) \widehat{w}' - i\tilde{\nu} \xi' (i\xi' \cdot \widehat{w}' + \partial_{x_n} \widehat{w}^n) \\ + i\xi' \left(\frac{\tilde{P}'(\rho_s)}{\gamma^2 \rho_s} \widehat{\phi} \right) + i\xi_1 v_s^1 \widehat{w}' + \widehat{w}^n e_1' - \frac{\nu}{\gamma^2 \rho_s} \widehat{\phi} e_1' = 0, \end{aligned}$$

$$(4.3) \quad \begin{aligned} & \partial_t \widehat{w}^n + \nu(|\xi'|^2 - \partial_{x_n}^2) \widehat{w}^n - \tilde{\nu} \partial_{x_n} (i\xi' \cdot \widehat{w}' + \partial_{x_n} \widehat{w}^n) \\ & + \partial_{x_n} \left(\frac{\tilde{P}'(\rho_s)}{\gamma^2 \rho_s} \widehat{\phi} \right) + i\xi_1 v_s^1 \widehat{w}^n = 0, \end{aligned}$$

$$(4.4) \quad \widehat{w}|_{x_n=0,1} = 0$$

for $t > 0$, and

$$(4.5) \quad \widehat{u}|_{t=0} = \widehat{u}_0 = {}^T(\widehat{\phi}_0, \widehat{w}_0).$$

Here $\widehat{\phi} = \widehat{\phi}(\xi', x_n, t)$ and $\widehat{w} = \widehat{w}(\xi', x_n, t)$ are the Fourier transform of $\phi = \phi(x', x_n, t)$ and $w = w(x', x_n, t)$ in $x' \in \mathbf{R}^{n-1}$ with $\xi' \in \mathbf{R}^{n-1}$ being the dual variable. We thus arrive at the following problem

$$(4.6) \quad \frac{d}{dt} u + \widehat{L}_{\xi'} u = 0, \quad w|_{x_n=0,1} = 0, \quad u|_{t=0} = u_0.$$

with a parameter $\xi' \in \mathbf{R}^{n-1}$. Here $u = {}^T(\phi(x_n, t), w(x_n, t))$ ($x_n \in [0, 1], t \geq 0$) and $\widehat{L}_{\xi'}$ is the operator of the form

$$\widehat{L}_{\xi'} = \widehat{A}_{\xi'} + \widehat{B}_{\xi'} + \widehat{C}_0,$$

where

$$\widehat{A}_{\xi'} = \begin{pmatrix} 0 & 0 & 0 \\ 0 & \frac{\nu}{\rho_s} \mathcal{A}_{\xi'} I_{n-1} + \frac{\tilde{\nu}}{\rho_s} \xi'^T \xi' & -i \frac{\tilde{\nu}}{\rho_s} \xi' \partial_{x_n} \\ 0 & -i \frac{\tilde{\nu}}{\rho_s} \xi'^T \partial_{x_n} & \frac{\nu}{\rho_s} \mathcal{A}_{\xi'} - \frac{\tilde{\nu}}{\rho_s} \partial_{x_n}^2 \end{pmatrix}$$

with

$$\begin{aligned} \mathcal{A}_{\xi'} &= |\xi'|^2 - \partial_{x_n}^2, \\ \widehat{B}_{\xi'} &= \begin{pmatrix} i\xi_1 v_s^1 & i\gamma^2 \xi'^T & \gamma^2 \partial_{x_n}(\rho_s \cdot) \\ i\xi'^T \frac{\tilde{P}'(\rho_s)}{\gamma^2 \rho_s} & i\xi_1 v_s^1 I_{n-1} & 0 \\ \partial_{x_n} \left(\frac{\tilde{P}'(\rho_s)}{\gamma^2 \rho_s} \cdot \right) & 0 & i\xi_1 v_s^1 \end{pmatrix}, \\ \widehat{C}_0 &= \begin{pmatrix} 0 & 0 & 0 \\ -\frac{\nu}{\gamma^2 \rho_s} \mathbf{e}'_1 & 0 & (\partial_{x_n} v_s^1) \mathbf{e}'_1 \\ 0 & 0 & 0 \end{pmatrix}. \end{aligned}$$

We note that, for each fixed ξ' , $\widehat{L}_{\xi'}$ is a closed operator on $H^1(0, 1) \times L^2(0, 1)$ with domain of definition $D(\widehat{L}_{\xi'}) = H^1(0, 1) \times (H^2(0, 1) \cap H_0^1(0, 1))$; and $-\widehat{L}_{\xi'}$

generates an analytic semigroup $e^{-t\widehat{L}_{\xi'}}$ in $H^1(0,1) \times L^2(0,1)$. Therefore, for each fixed ξ' , problem (4.1)–(4.5) has a unique solution $\widehat{u}(t) = e^{-t\widehat{L}_{\xi'}}\widehat{u}_0 \in C([0, \infty); H^1(0,1) \times L^2(0,1))$ with $\widehat{u}(t) \in C((0, \infty); D(\widehat{L}_{\xi'}))$. The solution $\mathcal{U}(t)u_0$ of (3.1) is then given by $\mathcal{U}(t)u_0 = \mathcal{F}^{-1}(e^{-t\widehat{L}_{\xi'}}\widehat{u}_0)$.

To prove Theorem 3.2 we decompose $\mathcal{U}(t)u_0$ in the following way. Let $R > 0$. Define $\chi^{(1)}(\xi')$ and $\chi^{(\infty)}(\xi')$ by $\chi^{(1)}(\xi') = 1$ if $|\xi'| \leq R$, $\chi^{(1)}(\xi') = 0$ if $|\xi'| > R$, and $\chi^{(\infty)} = 1 - \chi^{(1)}$.

We decompose $\mathcal{U}(t)u_0$ as

$$\mathcal{U}(t)u_0 = U_1(t)u_0 + U_\infty(t)u_0,$$

where

$$U_j(t)u_0 = \mathcal{F}^{-1}\left(\chi^{(j)}e^{-t\widehat{L}_{\xi'}}\widehat{u}_0\right), \quad j = 1, \infty.$$

In a similar manner to the proof of [11, Proposition 6.1], one can obtain the following decay estimate for $U_\infty(t)u_0$ by using the Fourier transformed version of the Matsumura-Nishida energy method (cf., [22]).

Proposition 4.1. *There exists constants $R_0 > 0$, $\nu_0 > 0$, $\gamma_0 > 0$ and $\omega_0 > 0$ such that if $R \geq R_0$, $\nu \geq \nu_0$, $(\nu + \tilde{\nu})/\gamma^2 \leq 1/\gamma_0^2$ and $|\omega| \leq \omega_0$, then the estimate*

$$\|U_\infty(t)u_0\|_{H^1} \leq Ce^{-d(t-1)}(\|u_0\|_{H^1 \times L^2} + \|\partial_{x'} w_0\|_2)$$

holds for $t \geq 1$ with a positive constant d .

To complete the proof of Theorem 3.2 we will show the following estimate for $U_1(t)u_0$.

Proposition 4.2. *For each $R > 0$, there exist $\nu_0 > 0$, $\gamma_0 > 0$ and $\omega_0 > 0$ such that if $\nu \geq \nu_0$, $(\nu + \tilde{\nu})/\gamma^2 \leq 1/\gamma_0^2$ and $|\omega| \leq \omega_0$, then the estimate*

$$\|\partial_{x'}^k \partial_{x_n}^l U_1(t)u_0\|_2 \leq Ct^{-\frac{n-1}{4} - \frac{k}{2}} \|u_0\|_{L^1(\mathbf{R}^{n-1}; L^2(0,1))}$$

holds for $t \geq 1$, $k, l = 0, 1$.

Theorem 3.2 now follows from Proposition 4.1 and Proposition 4.2 with $R = R_0$.

Proof of Proposition 4.2. To prove Proposition 4.2 we decompose $u(t)$ based on a spectral property of $\widehat{L}_{\xi'}$ with $\xi' = 0$, namely, \widehat{L}_0 .

We introduce the adjoint operator of $\widehat{L}_{\xi'}$ with respect to the weighted inner product $\langle \cdot, \cdot \rangle$. We define an operator $\widehat{L}_{\xi'}^*$ by

$$\widehat{L}_{\xi'}^* = \widehat{A}_{\xi'}^* + \widehat{B}_{\xi'}^* + \widehat{C}_0^*$$

with domain of definition $D(\widehat{L}_{\xi'}^*) = D(\widehat{L}_{\xi'})$, where

$$\widehat{A}_{\xi'}^* = \widehat{A}_{\xi'}, \quad \widehat{B}_{\xi'}^* = -\widehat{B}_{\xi'}$$

and

$$\widehat{C}_0^* = \begin{pmatrix} 0 & -\frac{\nu\gamma^2\rho_s}{\widehat{P}'(\rho_s)} e_1^T & 0 \\ 0 & 0 & 0 \\ 0 & (\partial_{x_n} v_s^1)^T e_1 & 0 \end{pmatrix}.$$

We then have

$$\begin{aligned} \langle \widehat{A}_{\xi'} u, v \rangle &= \langle u, \widehat{A}_{\xi'}^* v \rangle = \langle u, \widehat{A}_{\xi'} v \rangle, \\ \langle \widehat{B}_{\xi'} u, v \rangle &= \langle u, \widehat{B}_{\xi'}^* v \rangle = -\langle u, \widehat{B}_{\xi'} v \rangle, \\ \langle \widehat{C}_0 u, v \rangle &= \langle u, \widehat{C}_0^* v \rangle \end{aligned}$$

and

$$\langle \widehat{L}_{\xi'} u, v \rangle = \langle u, \widehat{L}_{\xi'}^* v \rangle$$

for $u, v \in D(\widehat{L}_{\xi'})$.

We begin with a lemma on the eigenvalue problem for \widehat{L}_0 and \widehat{L}_0^* .

Lemma 4.3. (i) $\lambda = 0$ is a simple eigenvalue of \widehat{L}_0 and \widehat{L}_0^* .

(ii) The eigenspaces for $\lambda = 0$ of \widehat{L}_0 and \widehat{L}_0^* are spanned by $u^{(0)}$ and $u^{(0)*}$, respectively, where $u^{(0)} = {}^T(\phi^{(0)}, w^{(0),1} e_1', 0)$ and $u^{(0)*} = {}^T(\phi^{(0)*}, 0, 0)$ with

$$\begin{aligned} \phi^{(0)}(x_n) &= \alpha_0 \frac{\gamma^2 \rho_s(x_n)}{\widehat{P}'(\rho_s(x_n))}, \quad \alpha_0 = \left(\int_0^1 \frac{\gamma^2 \rho_s}{\widehat{P}'(\rho_s)} dx_n \right)^{-1}, \\ w^{(0),1}(x_n) &= \frac{1}{\gamma^2} \int_0^1 G(x_n, y_n) \phi^{(0)}(y_n) dy_n, \\ \phi^{(0)*}(x_n) &= \frac{\gamma^2}{\alpha_0} \phi^{(0)}(x_n). \end{aligned}$$

(iii) The eigenprojections $\widehat{\Pi}^{(0)}$ and $\widehat{\Pi}^{(0)*}$ for $\lambda = 0$ of \widehat{L}_0 and \widehat{L}_0^* are given by

$$\begin{aligned} \widehat{\Pi}^{(0)} u &= \langle u, u^{(0)*} \rangle u^{(0)} = [Q_0 u] u^{(0)}, \\ \widehat{\Pi}^{(0)*} u &= \langle u, u^{(0)} \rangle u^{(0)*}, \end{aligned}$$

respectively.

(iv) Let $u^{(0)} = u_0^{(0)} + u_1^{(0)}$, where

$$u_0^{(0)} = {}^T(\phi^{(0)}, 0, 0), \quad u_1^{(0)} = {}^T(0, w^{(0),1} e_1', 0).$$

Then $u^{(0)*} = \frac{\gamma^2}{\alpha_0} u_0^{(0)}$ and

$$\langle u, u^{(0)} \rangle = \frac{\alpha_0}{\gamma^2} [\phi] + (w^1, w^{(0),1} \rho_s)$$

for $u = T(\phi, w', w^n)$.

Remark 4.4. We note that

$$\phi^{(0)} = O(1), \quad \alpha_0 = O(1), \quad w^{(0),1} = O(1/\gamma^2),$$

which will be frequently used in the argument below without mentioning.

Proof of Lemma 4.3. If $\widehat{L}_0 u = 0$, we have

$$\begin{cases} \gamma^2 \partial_{x_n} (\rho_s w^n) = 0, \\ -\frac{\nu}{\rho_s} \partial_{x_n}^2 w' - \frac{\nu}{\gamma^2 \rho_s} \phi e'_1 + (\partial_{x_n} v_s^1) w^n e'_1 = 0, \\ -\frac{\nu + \bar{\nu}}{\rho_s} \partial_{x_n}^2 w^n + \partial_{x_n} \left(\frac{\tilde{P}'(\rho_s)}{\gamma^2 \rho_s} \phi \right) = 0, \\ w|_{x_n=0,1} = 0. \end{cases}$$

The first equation, together with the boundary condition, gives $w^n = 0$. Then, by the third equation, $\frac{\tilde{P}'(\rho_s)}{\gamma^2 \rho_s} \phi$ is a constant, and therefore, $\phi = c \frac{\gamma^2 \rho_s}{\tilde{P}'(\rho_s)}$. Furthermore, the second equation, together with the boundary condition, gives $w' = w^1 e'_1$ with $w^1 = \frac{1}{\gamma^2} \int_0^1 G(x_n, y_n) \phi(y_n) dy_n$. Taking $c = \alpha_0$ we obtain the eigenfunction $u^{(0)}$.

Consider next $\widehat{L}_0 u = u^{(0)}$. Then we have

$$\gamma^2 \partial_{x_n} (\rho_s w^n) = \phi^{(0)}, \quad w^n|_{x_n=0,1} = 0.$$

It follows, by integration by parts, that

$$[\phi^{(0)}] = \gamma^2 [\partial_{x_n} (\rho_s w^n)] = 0.$$

But, clearly, $[\phi^{(0)}] \neq 0$, and so, we conclude that there is no u such that $\widehat{L}_0 u = u^{(0)}$. This shows that the eigenvalue 0 of \widehat{L}_0 is simple. Similarly one can prove assertion (i) for \widehat{L}_0^* . The remaining assertions now follow from (i). We omit the details. This completes the proof. \square

Based on Lemma 4.3 we decompose $u(t)$ into the parts of the eigenspace for $\lambda = 0$ and its complementary space. Let $u = T(\phi, w) \in H^1(0, 1) \times L^2(0, 1)$. We decompose u as

$$u = \sigma u^{(0)} + u_1,$$

where

$$\begin{aligned}\sigma &= [Q_0 u] = \langle u, u^{(0)*} \rangle, \\ u_1 &= (I - \widehat{\Pi}^{(0)})u.\end{aligned}$$

Remark 4.5. Due to the boundary condition $w|_{x_n=0,1} = 0$, the Poincaré inequality holds for the velocity part: $|w|_2 \leq |\partial_{x_n} w|_2$. Concerning the density part ϕ_2 , the Poincaré inequality does not necessarily hold. However, if $u_1 = (I - \widehat{\Pi}^{(0)})u = {}^T(\phi_1, w_1)$, then $[Q_0 u_1] = [\phi_1] = 0$, which implies that the Poincaré inequality also holds for ϕ_1 . Therefore, $|\phi_1|_2$ can also be controlled by $|\partial_{x_n} \phi_1|_2$. This simple observation will be useful in the argument below.

Using the decomposition introduced above, we rewrite problem (4.6). To do so, we define some notation. We write

$$\widetilde{M}_{\xi'} = \widehat{L}_{\xi'} - \widehat{L}_0 = \widetilde{A}_{\xi'} + \widetilde{B}_{\xi'},$$

where

$$\begin{aligned}\widetilde{A}_{\xi'} &= \widehat{A}_{\xi'} - \widehat{A}_0 = \begin{pmatrix} 0 & 0 & 0 \\ 0 & \frac{\nu}{\rho_s} |\xi'|^2 I_{n-1} + \frac{\tilde{\nu}}{\rho_s} \xi'^T \xi' & -i \frac{\tilde{\nu}}{\rho_s} \xi' \partial_{x_n} \\ 0 & -i \frac{\tilde{\nu}}{\rho_s} \xi'^T \partial_{x_n} & \frac{\nu}{\rho_s} |\xi'|^2 \end{pmatrix}, \\ \widetilde{B}_{\xi'} &= \widehat{B}_{\xi'} - \widehat{B}_0 = \begin{pmatrix} i \xi_1 v_s^1 & i \gamma^2 {}^T \xi' & 0 \\ i \xi' \frac{\tilde{P}'(\rho_s)}{\gamma^2 \rho_s} & i \xi_1 v_s^1 I_{n-1} & 0 \\ 0 & 0 & i \xi_1 v_s^1 \end{pmatrix}.\end{aligned}$$

Decomposing $u(t)$ in (4.6) as $u(t) = \sigma(t)u^{(0)} + u_1(t)$, we have

$$\frac{d}{dt}(\sigma u^{(0)} + u_1) + \widehat{L}_0 u_1 + \widetilde{M}_{\xi'}(\sigma u^{(0)} + u_1) = 0.$$

Applying $\widehat{\Pi}^{(0)}$ and $I - \widehat{\Pi}^{(0)}$ to this equation, we have

$$\begin{cases} \frac{d}{dt} \sigma u^{(0)} + \widehat{\Pi}^{(0)} \widetilde{M}_{\xi'}(\sigma u^{(0)} + u_1) = 0, \\ \frac{d}{dt} u_1 + \widehat{L}_0 u_1 + (I - \widehat{\Pi}^{(0)}) \widetilde{M}_{\xi'}(\sigma u^{(0)} + u_1) = 0. \end{cases}$$

Since $\widehat{\Pi}^{(0)} \widetilde{M}_{\xi'} u = [Q_0 \widetilde{M}_{\xi'} u] u^{(0)}$ and $Q_0 \widetilde{M}_{\xi'} = Q_0 \widetilde{B}_{\xi'}$, we arrive at

$$(4.7) \quad \frac{d}{dt} \sigma + [Q_0 \widetilde{B}_{\xi'}(\sigma u^{(0)} + u_1)] = 0,$$

$$(4.8) \quad \frac{d}{dt}u_1 + \widehat{L}_0 u_1 + \widetilde{M}_{\xi'}(\sigma u^{(0)} + u_1) - [Q_0 \widetilde{B}_{\xi'}(\sigma u^{(0)} + u_1)]u^{(0)} = 0.$$

Proposition 4.2 can be proved by estimating solutions of (4.7)–(4.8). We will frequently use the following lemma.

Lemma 4.6. (i) $\langle u^{(0)}, u_1 \rangle = \langle u_1^{(0)}, u_1 \rangle$ holds for $u_1 \in R(I - \widehat{\Pi}^{(0)})$.

$$(ii) \quad \left| [Q_0 \widetilde{B}_{\xi'} u_0^{(0)}] \right| + \left| [Q_0 \widetilde{B}_{\xi'} u_1^{(0)}] \right| \leq C|\xi'|.$$

(iii) $\left| [Q_0 \widetilde{B}_{\xi'} u_1] \right| \leq C|\xi'|(|\phi_1|_2 + \gamma^2|w'_1|)$ holds for $u_1 = {}^T(\phi_1, w'_1, w_1^n) \in R(I - \widehat{\Pi}^{(0)})$.

The proof of Lemma 4.5 is straightforward, so we omit it.

We will employ an energy method to obtain the necessary estimates on solutions of (4.7)–(4.8).

We introduce some notations. For $u = {}^T(\phi, w)$ we define $E_0(u)$ by

$$E_0(u) = \frac{1}{\gamma^2} \left| \sqrt{\frac{\widehat{P}'(\rho_s)}{\gamma^2 \rho_s}} \phi \right|_2^2 + \left| \sqrt{\rho_s} w \right|_2^2.$$

For $v = \phi$, $v = w = {}^T(w_1, \dots, w^n)$ or $v = {}^T(\phi, w)$, we define $D_{\xi'}(v)$ by

$$D_{\xi'}(v) = |\xi'|^2 |v|_2^2 + |\partial_{x_n} v|_2^2,$$

and, for $w = {}^T(w_1, \dots, w^n)$, we define $\widetilde{D}_{\xi'}(w)$ by

$$\widetilde{D}_{\xi'}(w) = \nu D_{\xi'}(w) + \tilde{\nu} |i\xi' \cdot w' + \partial_{x_n} w^n|_2^2.$$

Proposition 4.7. *There exists $\nu_0 > 0$ such that if $\nu \geq \nu_0$, then*

$$(4.9) \quad \begin{aligned} & \frac{d}{dt} \left(\frac{\alpha_0}{\gamma^2} |\sigma|^2 + E_0(u_1) \right) + \widetilde{D}_{\xi'}(w_1) \\ & \leq C \left\{ \left(\frac{\nu}{\gamma^4} + \frac{1}{\gamma^2} \right) |\phi_1|_2^2 + \left(\frac{\nu + \tilde{\nu}}{\gamma^4} + \frac{1}{\gamma^2} \right) |\xi'|^2 |\sigma|^2 \right\}. \end{aligned}$$

Proof. Multiplying (4.7) by $\bar{\sigma}(t)$ and taking the real part of the resulting equation, we have

$$\frac{1}{2} \frac{d}{dt} |\sigma|^2 + \operatorname{Re} \{ [Q_0 \widetilde{B}_{\xi'}(\sigma u^{(0)} + u_1)] \bar{\sigma} \} = 0.$$

Since $\widetilde{B}_{\xi'}^* = -\widetilde{B}_{\xi'}$, $u^{(0)} = u_0^{(0)} + u_1^{(0)}$ and $u^{(0)*} = \frac{\gamma^2}{\alpha_0} u_0^{(0)}$, we have

$$\begin{aligned} [Q_0 \widetilde{B}_{\xi'} u_1] \bar{\sigma} &= \langle \widetilde{B}_{\xi'} u_1, \sigma u^{(0)*} \rangle = -\langle u_1, \widetilde{B}_{\xi'}(\sigma u^{(0)*}) \rangle \\ &= -\frac{\gamma^2}{\alpha_0} \langle u_1, \widetilde{B}_{\xi'}(\sigma u_0^{(0)}) \rangle. \end{aligned}$$

Furthermore, we have

$$[Q_0 \widetilde{B}_{\xi'}(\sigma u^{(0)})] \bar{\sigma} = i \xi_1 |\sigma|^2 \{ [v_s^1 \phi^{(0)}] + \gamma^2 [\rho_s w^{(0),1}] \},$$

and, thus, $\text{Re} [Q_0 \widetilde{B}_{\xi'}(\sigma u^{(0)})] \bar{\sigma} = 0$. It then follows that

$$(4.10) \quad \frac{1}{2} \frac{d}{dt} |\sigma|^2 - \frac{\gamma^2}{\alpha_0} \text{Re} \langle u_1, \widetilde{B}_{\xi'}(\sigma u_0^{(0)}) \rangle = 0.$$

We next take the inner product of (4.8) with u_1 . Then the real part of the resulting equation gives

$$(4.11) \quad \begin{aligned} \frac{1}{2} \frac{d}{dt} E_0(u_1) + \text{Re} \langle \widehat{L}_0 u_1, u_1 \rangle + \text{Re} \langle \widetilde{M}_{\xi'}(\sigma u^{(0)} + u_1), u_1 \rangle \\ - \text{Re} [Q_0 \widetilde{B}_{\xi'}(\sigma u^{(0)} + u_1)] \langle u^{(0)}, u_1 \rangle = 0. \end{aligned}$$

Since $\widehat{B}_{\xi'}^* = -\widehat{B}_{\xi'}$, we have $\text{Re} \langle \widehat{B}_{\xi'} u_1, u_1 \rangle = 0$. It then follows that

$$\begin{aligned} &\text{Re} \langle \widehat{L}_0 u_1, u_1 \rangle + \text{Re} \langle \widetilde{M}_{\xi'}(\sigma u^{(0)} + u_1), u_1 \rangle \\ &= \text{Re} \langle \widehat{A}_{\xi'} u_1, u_1 \rangle + \text{Re} \langle \widehat{C}_0 u_1, u_1 \rangle + \text{Re} \langle \widetilde{A}_{\xi'}(\sigma u^{(0)}), u_1 \rangle \\ &\quad + \text{Re} \langle \widetilde{B}_{\xi'}(\sigma u^{(0)}), u_1 \rangle \\ &= \widetilde{D}_{\xi'}(w_1) + \text{Re} \langle \widehat{C}_0 u_1, u_1 \rangle + \text{Re} \langle \widetilde{A}_{\xi'}(\sigma u^{(0)}), u_1 \rangle \\ &\quad + \text{Re} \langle \widetilde{B}_{\xi'}(\sigma u^{(0)}), u_1 \rangle. \end{aligned}$$

This, together with (4.11), yields

$$(4.12) \quad \begin{aligned} \frac{1}{2} \frac{d}{dt} E_0(u_1) + \widetilde{D}_{\xi'}(w_1) + \text{Re} \langle \widehat{C}_0 u_1, u_1 \rangle \\ + \text{Re} \langle \widetilde{A}_{\xi'}(\sigma u^{(0)}), u_1 \rangle + \text{Re} \langle \widetilde{B}_{\xi'}(\sigma u^{(0)}), u_1 \rangle \\ - \text{Re} [Q_0 \widetilde{B}_{\xi'}(\sigma u^{(0)} + u_1)] \langle u^{(0)}, u_1 \rangle = 0. \end{aligned}$$

We add $\frac{\alpha_0}{\gamma^2} \times (4.10)$ to (4.12) to eliminate $\operatorname{Re} \langle \widetilde{B}_{\xi'}(\sigma u_0^{(0)}), u_1 \rangle$ and obtain

$$\begin{aligned}
& \frac{1}{2} \frac{d}{dt} \left(\frac{\alpha_0}{\gamma^2} |\sigma|^2 + E_0(u_1) \right) + \widetilde{D}_{\xi'}(w_1) \\
(4.13) \quad & = -\operatorname{Re} \langle \widehat{C}_0 u_1, u_1 \rangle - \operatorname{Re} \langle \widetilde{A}_{\xi'}(\sigma u^{(0)}), u_1 \rangle \\
& \quad - \operatorname{Re} \langle \widetilde{B}_{\xi'}(\sigma u_1^{(0)}), u_1 \rangle \\
& \quad + \operatorname{Re} [Q_0 \widetilde{B}_{\xi'}(\sigma u^{(0)} + u_1)] \langle u^{(0)}, u_1 \rangle.
\end{aligned}$$

Applying Lemma 4.6, and the Poincaré and Hölder inequalities to the right side of (4.13), we have the desired estimate. This completes the proof. \square

Before proceeding further we introduce some quantities. We define $J(u)$ by

$$J(u) = -2\operatorname{Re} \langle \sigma u^{(0)} + u_1, \widehat{B}_{\xi'} \widetilde{Q} u_1 \rangle \quad \text{for } u = \sigma u^{(0)} + u_1.$$

We note that there exists a constant $b_1 > 0$ such that

$$|J(u)| \leq \frac{b_1 \gamma^2}{2\nu} \left(\frac{\alpha_0}{\gamma^2} |\sigma|^2 + E_0(u_1) \right).$$

With this constant b_1 , we define $E_1[u]$ by

$$E_1(u) = \left(1 + \frac{b_1 \gamma^2}{\nu} \right) \left(\frac{\alpha_0}{\gamma^2} |\sigma|^2 + E_0(u_1) \right) + \widetilde{D}_{\xi'}(w_1) + J(u).$$

For $E_1(u)$ we have the following estimate.

Proposition 4.8. *There exists $\nu_0 > 0$ such that if $\nu \geq \nu_0$ and $\gamma^2 \geq 1$, then*

$$\begin{aligned}
(4.14) \quad & \frac{d}{dt} E_1(u) + \left(1 + \frac{b_1 \gamma^2}{\nu} \right) \widetilde{D}_{\xi'}(w_1) + |\sqrt{\rho_s} \partial_t w_1|_2^2 \\
& \leq C \left\{ \left(\frac{1}{\gamma^2} + \frac{1}{\nu} + \frac{\nu^2}{\gamma^4} \right) |\phi_1|_2^2 + \frac{1}{\gamma^2} |\xi'|^2 |\phi_1|_2^2 \right. \\
& \quad \left. + \left(\frac{\nu + \bar{\nu}}{\gamma^2} + \frac{1}{\nu} + \frac{1}{\gamma^2} \right) |\xi'|^2 |\sigma|^2 + \frac{(\nu + \bar{\nu})^2}{\gamma^4} |\xi'|^4 |\sigma|^2 \right\}.
\end{aligned}$$

Proof. We recall that $u = \sigma u^{(0)} + u_1$ satisfies

$$(4.15) \quad \frac{d}{dt} u + \widehat{L}_{\xi'} u = 0$$

We take the inner product of (4.15) with $\partial_t \widetilde{Q} u_1$ to obtain

$$\langle \partial_t u, \partial_t \widetilde{Q} u_1 \rangle + \langle \widehat{L}_{\xi'} u, \partial_t \widetilde{Q} u_1 \rangle = 0$$

with $u = \sigma u^{(0)} + u_1$. Since

$$\partial_t \sigma = -[Q_0 \tilde{B}_{\xi'}(\sigma u^{(0)} + u_1)]$$

and

$$\langle u^{(0)}, \partial_t \tilde{Q} u_1 \rangle = \langle u_1^{(0)}, \partial_t \tilde{Q} u_1 \rangle,$$

by using Remark 4.4 and Lemma 4.6, we have

$$\begin{aligned} & \operatorname{Re} \langle \partial_t u, \partial_t \tilde{Q} u_1 \rangle \\ &= \operatorname{Re} \left\{ \langle \partial_t \sigma u^{(0)}, \partial_t \tilde{Q} u_1 \rangle + \langle \partial_t u_1, \partial_t \tilde{Q} u_1 \rangle \right\} \\ &= \operatorname{Re} \left\{ -[Q_0 \tilde{B}_{\xi'}(\sigma u^{(0)} + u_1)] \langle u_1^{(0)}, \partial_t \tilde{Q} u_1 \rangle + |\sqrt{\rho_s} \partial_t w_1|_2^2 \right\} \\ &\geq \frac{3}{4} |\sqrt{\rho_s} \partial_t w_1|_2^2 - C \left\{ \frac{|\xi'|^2}{\gamma^4} (|\sigma|^2 + |\phi_1|_2^2) + \frac{1}{\nu \gamma^2} \tilde{D}_{\xi'}(w_1) \right\}. \end{aligned}$$

Since $\hat{L}_0 u^{(0)} = 0$ and $\hat{B}_0 u^{(0)} = 0$, we see that

$$\begin{aligned} & \langle \hat{L}_{\xi'} u, \partial_t \tilde{Q} u_1 \rangle \\ &= \langle \tilde{M}_{\xi'}(\sigma u^{(0)}), \partial_t \tilde{Q} u_1 \rangle + \langle \hat{L}_{\xi'} u_1, \partial_t \tilde{Q} u_1 \rangle \\ &= \langle \tilde{A}_{\xi'}(\sigma u^{(0)}), \partial_t \tilde{Q} u_1 \rangle + \langle \tilde{B}_{\xi'}(\sigma u^{(0)}), \partial_t \tilde{Q} u_1 \rangle \\ &\quad + \langle \hat{A}_{\xi'} u_1, \partial_t \tilde{Q} u_1 \rangle + \langle \hat{B}_{\xi'} u_1, \partial_t \tilde{Q} u_1 \rangle + \langle \hat{C}_0 u_1, \partial_t \tilde{Q} u_1 \rangle \\ &= \langle \tilde{A}_{\xi'}(\sigma u^{(0)}), \partial_t \tilde{Q} u_1 \rangle + \langle \hat{B}_{\xi'}(\sigma u^{(0)} + u_1), \partial_t \tilde{Q} u_1 \rangle \\ &\quad + \langle \hat{A}_{\xi'} u_1, \partial_t \tilde{Q} u_1 \rangle + \langle \hat{C}_0 u_1, \partial_t \tilde{Q} u_1 \rangle. \end{aligned}$$

We will show that

$$\begin{aligned} & \operatorname{Re} \left\{ \langle \hat{B}_{\xi'}(\sigma u^{(0)} + u_1), \partial_t \tilde{Q} u_1 \rangle + \langle \hat{A}_{\xi'} u_1, \partial_t \tilde{Q} u_1 \rangle \right\} \\ &\geq \frac{1}{2} \frac{d}{dt} \left(\tilde{D}_{\xi'}(w_1) + J(u) \right) - \varepsilon |\sqrt{\rho_s} \partial_t w_1|_2^2 \\ (4.16) \quad & - C \left\{ \frac{|\xi'|^2}{\gamma^2} (|\sigma|^2 + |\phi_1|_2^2) + \frac{\gamma^2}{\nu} \tilde{D}_{\xi'}(w_1) \right. \\ & \quad \left. + \frac{|\xi'|^2}{\varepsilon} |w_1|_2^2 + \frac{|\xi'|^2}{\varepsilon \gamma^4} |\sigma|^2 \right\} \end{aligned}$$

for any $\varepsilon > 0$.

It is easy to see that

$$(4.17) \quad \operatorname{Re} \langle \hat{A}_{\xi'} u_1, \partial_t \tilde{Q} u_1 \rangle = \frac{1}{2} \frac{d}{dt} \tilde{D}_{\xi'}(w_1).$$

Since $\widehat{B}_{\xi'}^* = -\widehat{B}_{\xi'}$, we have

$$(4.18) \quad \begin{aligned} & \langle \widehat{B}_{\xi'}(\sigma u_0^{(0)}), \partial_t \widetilde{Q}u_1 \rangle \\ &= -\frac{d}{dt} \langle \sigma u_0^{(0)}, \widehat{B}_{\xi'} \widetilde{Q}u_1 \rangle + \langle \partial_t \sigma u_0^{(0)}, \widehat{B}_{\xi'} \widetilde{Q}u_1 \rangle. \end{aligned}$$

By (4.7), we have

$$\partial_t \sigma = -[Q_0 \widetilde{B}_{\xi'}(\sigma u_0^{(0)} + u_1)].$$

Lemma 4.6 then implies

$$(4.19) \quad \begin{aligned} & \left| \langle \partial_t \sigma u_0^{(0)}, \widehat{B}_{\xi'} \widetilde{Q}u_1 \rangle \right| \\ & \leq \left| [Q_0 \widetilde{B}_{\xi'}(\sigma u_0^{(0)} + u_1)] \right| \left| \langle u_0^{(0)}, \widehat{B}_{\xi'} \widetilde{Q}u_1 \rangle \right| \\ & \leq C \left\{ \frac{|\xi'|^2}{\gamma^2} (|\sigma|^2 + |\phi_1|_2^2) \frac{\gamma^2}{\nu} \widetilde{E}_{\xi'}(w_1) \right\}. \end{aligned}$$

Similarly,

$$(4.20) \quad \begin{aligned} & \langle \widehat{B}_{\xi'} u_1, \partial_t \widetilde{Q}u_1 \rangle \\ &= -\frac{d}{dt} \langle u_1, \widehat{B}_{\xi'} \widetilde{Q}u_1 \rangle + \langle \partial_t u_1, \widehat{B}_{\xi'} \widetilde{Q}u_1 \rangle \\ &= -\frac{d}{dt} \langle u_1, \widehat{B}_{\xi'} \widetilde{Q}u_1 \rangle + \langle \partial_t Q_0 u_1, \widehat{B}_{\xi'} \widetilde{Q}u_1 \rangle + \langle \partial_t \widetilde{Q}u_1, \widehat{B}_{\xi'} \widetilde{Q}u_1 \rangle. \end{aligned}$$

We first estimate the second term on the right of (4.20). By (4.8), we have

$$\begin{aligned} & \partial_t Q_0 u_1 \\ &= -Q_0 \left\{ \widehat{L}_{\xi'} u_1 + \widetilde{M}_{\xi'}(\sigma u_0^{(0)}) - [Q_0 \widetilde{B}_{\xi'}(\sigma u_0^{(0)} + u_1)] u_0^{(0)} \right\} \\ &= - \left\{ Q_0 \widehat{B}_{\xi'} u_1 + Q_0 \widetilde{B}_{\xi'}(\sigma u_0^{(0)}) - [Q_0 \widetilde{B}_{\xi'}(\sigma u_0^{(0)} + u_1)] u_0^{(0)} \right\}. \end{aligned}$$

Since $\langle \partial_t Q_0 u_1, \widehat{B}_{\xi'} \widetilde{Q}u_1 \rangle = \langle \partial_t Q_0 u_1, Q_0 \widehat{B}_{\xi'} \widetilde{Q}u_1 \rangle$, we see from Lemma 4.6 that

$$(4.21) \quad \begin{aligned} & \left| \langle \partial_t Q_0 u_1, \widehat{B}_{\xi'} \widetilde{Q}u_1 \rangle \right| \\ & \leq C \left\{ |Q_0 \widehat{B}_{\xi'} u_1|_2 + |Q_0 \widetilde{B}_{\xi'}(\sigma u_0^{(0)})|_2 \right. \\ & \quad \left. + |[Q_0 \widetilde{B}_{\xi'}(\sigma u_0^{(0)} + u_1)]| |u_0^{(0)}|_2 \right\} \times |Q_0 \widehat{B}_{\xi'} \widetilde{Q}u_1|_2 \\ & \leq C \left\{ \frac{|\xi'|^2}{\gamma^2} (|\sigma|^2 + |\phi_1|_2^2) + \frac{\gamma^2}{\nu} \widetilde{D}_{\xi'}(w_1) \right\}. \end{aligned}$$

The third term on the right of (4.20) is estimated as

$$\begin{aligned} \left| \langle \partial_t \tilde{Q}u_1, \widehat{B}_{\xi'} \tilde{Q}u_1 \rangle \right| &\leq C |\sqrt{\rho_s} \partial_t w_1|_2 |\xi'| |w_1|_2 \\ &\leq \varepsilon |\sqrt{\rho_s} \partial_t w_1|_2^2 + \frac{C}{\varepsilon \nu} \tilde{D}_{\xi'}(w_1) \end{aligned}$$

for any $\varepsilon > 0$. This, together with (4.21), gives

$$\begin{aligned} (4.22) \quad &\operatorname{Re} \langle \widehat{B}_{\xi'} u_1, \partial_t \tilde{Q}u_1 \rangle \\ &\geq -\frac{d}{dt} \langle u_1, \widehat{B}_{\xi'} \tilde{Q}u_1 \rangle - \varepsilon |\sqrt{\rho_s} \partial_t w_1|_2^2 \\ &\quad - C \left\{ \frac{|\xi'|^2}{\gamma^2} (|\sigma|^2 + |\phi_1|_2^2) + \left(\frac{\gamma^2}{\nu} + \frac{C}{\varepsilon \nu} \right) \tilde{D}_{\xi'}(w_1) \right\} \end{aligned}$$

for any $\varepsilon > 0$.

It remains to estimate $\langle \widehat{B}_{\xi'}(\sigma u_1^{(0)}), \partial_t \tilde{Q}u_1 \rangle$. But, by Remark 4.4, this can be estimates as

$$\begin{aligned} (4.23) \quad &\left| \langle \widehat{B}_{\xi'}(\sigma u_1^{(0)}), \partial_t \tilde{Q}u_1 \rangle \right| \leq C \frac{|\xi'|}{\gamma^2} |\sigma| |\sqrt{\rho_s} \partial_t w_1|_2 \\ &\leq \varepsilon |\sqrt{\rho_s} \partial_t w_1|_2^2 + \frac{C}{\varepsilon} \frac{|\xi'|^2}{\gamma^4} |\sigma|^2 \end{aligned}$$

for all $\varepsilon > 0$. We thus obtain (4.16) from (4.17), (4.18), (4.19), (4.22) and (4.23).

A straightforward computation gives

$$\begin{aligned} &\left| \langle \widehat{A}_{\xi'}(\sigma u^{(0)}), \partial_t \tilde{Q}u_1 \rangle \right| \\ &\leq \varepsilon |\sqrt{\rho_s} \partial_t w_1|_2^2 + \frac{C}{\varepsilon} \frac{(\nu + \tilde{\nu})^2}{\gamma^4} |\xi'|^2 (1 + |\xi'|^2) |\sigma|^2 \end{aligned}$$

and

$$\left| \langle \widehat{C}_0 u_1, \partial_t \tilde{Q}u_1 \rangle \right| \leq \varepsilon |\sqrt{\rho_s} \partial_t w_1|_2^2 + \frac{C}{\varepsilon} \left\{ \frac{\nu^2}{\gamma^4} |\phi_1|_2^2 + |w_1|_2^2 \right\}$$

for any $\varepsilon > 0$.

Taking $\varepsilon > 0$ suitably small, we obtain the desired estimate. This completes the proof. \square

We next derive a dissipative estimate for $\partial_{x_n} \phi_1$, which also controls $|\phi_1|_2$ by Poincaré's inequality as mentioned in Remark 4.5,.

Proposition 4.9. *There exists a constant $\omega_0 > 0$ such that if $|\omega| \leq \omega_0$, then*

$$\begin{aligned}
(4.24) \quad & \frac{d}{dt} \frac{1}{\gamma^2} \left| \sqrt{\frac{\tilde{P}'(\rho_s)}{\gamma^2 \rho_s}} \partial_{x_n} \phi_1 \right|_2^2 + \frac{1}{\nu + \tilde{\nu}} \left| \frac{\tilde{P}'(\rho_s)}{\gamma^2} \partial_{x_n} \phi_1 \right|_2^2 \\
& \leq C \left\{ \left(\frac{\nu + \tilde{\nu}}{\nu} |\omega|^2 + \frac{1}{\nu + \tilde{\nu}} \left(\frac{1}{\nu} + |\xi'|^2 \right) \right) \tilde{D}_{\xi'}(w_1) \right. \\
& \quad \left. + \frac{1}{\nu + \tilde{\nu}} |\sqrt{\rho_s} \partial_t w_1|_2^2 \right. \\
& \quad \left. + \frac{\nu + \tilde{\nu}}{\gamma^4} |\xi'|^2 (|\sigma|^2 + |\phi_1|_2^2) \right\}.
\end{aligned}$$

Proof. The first row of equation (4.8) is written as

$$\begin{aligned}
& \partial_t \phi_1 + i \xi' v_s^1 \phi_1 + \gamma^2 \rho_s i \xi' \cdot w_1' + \gamma^2 \partial_{x_n} (\rho_s w_1^n) \\
& \quad + i \xi_1 v_s^1 \sigma \phi^{(0)} + \gamma^2 \rho_s i \xi_1 \sigma w^{(0),1} \\
& \quad - [Q_0 \tilde{B}_{\xi'} (\sigma u^{(0)} + u_1)] \phi^{(0)} = 0.
\end{aligned}$$

Differentiating this in x_n we have

$$(4.25) \quad \partial_t \partial_{x_n} \phi_1 + i \xi' v_s^1 \partial_{x_n} \phi_1 + \gamma^2 \rho_s \partial_{x_n}^2 w_1^n = H^0,$$

where

$$\begin{aligned}
H^0 = & - \left\{ \gamma^2 \partial_{x_n} (\rho_s i \xi' \cdot w_1') + \gamma^2 \partial_{x_n} (w_1^n \partial_{x_n} \rho_s) \right. \\
& \quad \left. + i \xi_1 \sigma (\partial_{x_n} (v_s^1 \phi^{(0)}) + \gamma^2 \partial_{x_n} (\rho_s w^{(0),1})) \right. \\
& \quad \left. - [Q_0 \tilde{B}_{\xi'} (\sigma u^{(0)} + u_1)] \partial_{x_n} \phi^{(0)} \right\}.
\end{aligned}$$

We next rewrite the n th row of equation (4.8) as

$$(4.26) \quad - \frac{\nu + \tilde{\nu}}{\rho_s} \partial_{x_n}^2 w_1^n + \frac{\tilde{P}'(\rho_s)}{\gamma^2 \rho_s} \partial_{x_n} \phi_1 = \tilde{g}_1^n,$$

where

$$\begin{aligned}
\tilde{g}_1^n = & - \left\{ \partial_t w_1^n + i \xi_1 v_s^1 w_1^n + \frac{\nu}{\rho_s} |\xi'|^2 w_1^n \right. \\
& \quad \left. - \frac{\tilde{\nu}}{\rho_s} i \xi' \cdot \partial_{x_n} w_1' + \phi_1 \partial_{x_n} \left(\frac{\tilde{P}'(\rho_s)}{\gamma^2 \rho_s} \right) \right. \\
& \quad \left. - \frac{\tilde{\nu}}{\rho_s} i \xi_1 \sigma \partial_{x_n} w^{(0),1} \right\}.
\end{aligned}$$

Adding $\frac{\gamma^2 \rho_s^2}{\nu + \tilde{\nu}} \times (4.26)$ to (4.25), we have

$$(4.27) \quad \partial_t \partial_{x_n} \phi_1 + i \xi' v_s^1 \partial_{x_n} \phi_1 + \frac{\rho_s \tilde{P}'(\rho_s)}{\nu + \tilde{\nu}} \partial_{x_n} \phi_1 = H,$$

where

$$H = H^0 + \frac{\gamma^2 \rho_s^2}{\nu + \tilde{\nu}} \tilde{g}_1^n.$$

We take the inner product of (4.27) with $\frac{\tilde{P}'(\rho_s)}{\gamma^4 \rho_s} \partial_{x_n} \phi_1$. Then the real part of the resulting equation gives

$$\begin{aligned} & \frac{1}{2} \frac{d}{dt} \frac{1}{\gamma^2} \left| \sqrt{\frac{\tilde{P}'(\rho_s)}{\gamma^2 \rho_s}} \partial_{x_n} \phi_1 \right|_2^2 + \frac{1}{\nu + \tilde{\nu}} \left| \frac{\tilde{P}'(\rho_s)}{\gamma^2} \partial_{x_n} \phi_1 \right|_2 \\ &= \operatorname{Re} \left(H, \frac{\tilde{P}'(\rho_s)}{\gamma^4 \rho_s} \partial_{x_n} \phi_1 \right) \\ &\leq \frac{1}{4} \frac{1}{\nu + \tilde{\nu}} \left| \frac{\tilde{P}'(\rho_s)}{\gamma^2} \partial_{x_n} \phi_1 \right|_2^2 + C \frac{\nu + \tilde{\nu}}{\gamma^4} \left| \frac{1}{\rho_s} H \right|_2^2, \end{aligned}$$

and, hence,

$$\begin{aligned} & \frac{1}{2} \frac{d}{dt} \frac{1}{\gamma^2} \left| \sqrt{\frac{\tilde{P}'(\rho_s)}{\gamma^2 \rho_s}} \partial_{x_n} \phi_1 \right|_2^2 + \frac{3}{4} \frac{1}{\nu + \tilde{\nu}} \left| \frac{\tilde{P}'(\rho_s)}{\gamma^2} \partial_{x_n} \phi_1 \right|_2 \\ &\leq C \frac{\nu + \tilde{\nu}}{\gamma^4} \left| \frac{1}{\rho_s} H \right|_2^2. \end{aligned}$$

By Proposition 2.1, $\rho_s = 1 + O(\omega)$ and $\frac{\tilde{P}'(\rho_s)}{\gamma^2} = 1 + O(\omega)$. Using these facts and Lemma 4.6, we can estimate $\left| \frac{1}{\rho_s} H \right|_2^2$ to obtain the desired estimate. This completes the proof. \square

We finally derive a dissipative estimate for σ .

Proposition 4.10. *There exist constants ν_0 and $\gamma_0 > 0$ such that if $\nu \geq \nu_0$ and $\frac{\nu + \tilde{\nu}}{\gamma^2} \leq \frac{1}{\gamma_0^2}$, then*

$$\begin{aligned} & \frac{d}{dt} |\sigma|^2 + \frac{\tilde{\alpha}_0 \gamma^2}{\nu} \min \{1, |\xi'|^2\} |\sigma|^2 \\ (4.28) \quad & \leq C \left\{ \left(\frac{\nu}{\gamma^2} + \frac{\gamma^2}{\nu} \right) (1 + |\xi'|^2) |\phi_1|_2^2 \right. \\ & \quad \left. + \frac{\gamma^2}{\nu} |\sqrt{\rho_s} \partial_t w_1|_2^2 + \frac{\gamma^2}{\nu} (1 + \tilde{\nu}) \tilde{D}_{\xi'}(w_1) \right\} \end{aligned}$$

with some positive constant $\tilde{\alpha}_0$.

Proof. Since

$$[Q_0 \tilde{B}_{\xi'}(\sigma u^{(0)} + u_1)] = [Q_0 \tilde{B}_{\xi'} u^{(0)}] \sigma + i \xi' [v_s^1 \phi_1] + \gamma^2 [\rho_s i \xi' \cdot w_1'],$$

we see from (4.7) that

$$(4.29) \quad \partial_t \sigma + [Q_0 \tilde{B}_{\xi'} u^{(0)}] \sigma + \gamma^2 [\rho_s i \xi' \cdot w_1'] = -i \xi' [v_s^1 \phi_1].$$

On the other hand, since $\frac{\tilde{P}'(\rho_s)}{\gamma^2 \rho_s} \phi^{(0)} = \alpha_0$, we have

$$\tilde{B}'_{\xi'} u_0^{(0)} = i \xi' \frac{\tilde{P}'(\rho_s)}{\gamma^2 \rho_s} \phi^{(0)} = i \xi' \alpha_0.$$

This, together with (4.8), gives

$$(4.30) \quad (|\xi'|^2 - \partial_{x_n}^2) w'_1 = -\frac{\alpha_0}{\nu} i \xi' \sigma \rho_s + h'_1.$$

Here

$$\begin{aligned} h'_1 = & -\frac{\rho_s}{\nu} \left\{ \partial_t w'_1 + \widehat{C}'_0 u_1 - \frac{\tilde{\nu}}{i} \xi' (i \xi' \cdot w'_1 + \partial_{x_n} w_1^n) \right. \\ & + \tilde{B}'_{\xi'} u_1 + \sigma \widetilde{M}'_{\xi'} u_1^{(0)} \\ & \left. - [Q_0 \tilde{B}'_{\xi'} (\sigma u^{(0)} + u_1)] w^{(0),1} \mathbf{e}'_1 \right\}, \end{aligned}$$

where $\widetilde{M}'_{\xi'}$, $\tilde{B}'_{\xi'}$ and \widehat{C}'_0 are $(n-1) \times (n+1)$ matrix operators defined by

$$\begin{aligned} \widetilde{M}'_{\xi'} &= \begin{pmatrix} 0 & \frac{\tilde{\nu}}{\rho_s} \xi'^T \xi' & -\frac{\tilde{\nu}}{\rho_s} i \xi' \partial_{x_n} \end{pmatrix} + \tilde{B}'_{\xi'}, \\ \tilde{B}'_{\xi'} &= \begin{pmatrix} i \xi' \frac{\tilde{P}'(\rho_s)}{\gamma^2 \rho_s} & i \xi_1 v_s^1 I_{n-1} & 0 \end{pmatrix}, \\ \widehat{C}'_0 &= \begin{pmatrix} -\frac{\nu}{\gamma^2 \rho_s} \mathbf{e}'_1 & 0 & (\partial_{x_n} v_s^1) \mathbf{e}'_1 \end{pmatrix}. \end{aligned}$$

We next introduce an operator A on $L^2(0, 1)$ with domain of definition $D(A)$ defined by $A\varphi = -\partial_{x_n}^2 \varphi$ for $\varphi \in D(A) = H^2(0, 1) \cap H_0^1(0, 1)$. By (4.30) we have

$$(|\xi'|^2 + A) w' = -\frac{\alpha_0}{\nu} i \xi' \sigma \rho_s + h'_1.$$

It then follows that

$$w' = -\frac{\alpha_0}{\nu} i \xi' \sigma (|\xi'|^2 + A)^{-1} \rho_s + (|\xi'|^2 + A)^{-1} h'_1.$$

Substituting this into (4.29) we have

$$(4.31) \quad \partial_t \sigma + [Q_0 \tilde{B}'_{\xi'} u^{(0)}] \sigma + \frac{\alpha_0 \gamma^2}{\nu} [\rho_s (|\xi'|^2 + A)^{-1} \rho_s] |\xi'|^2 \sigma = h^0,$$

where

$$h^0 = -i \xi' [v_s^1 \phi_1] - \gamma^2 [\rho_s i \xi' \cdot (|\xi'|^2 + A)^{-1} h'_1].$$

We multiply (4.31) by $\bar{\sigma}$. Then since $[Q_0 \tilde{B}'_{\xi'} u^{(0)}] \in i\mathbf{R}$, the real part of the resulting equation yields

$$\frac{1}{2} \frac{d}{dt} |\sigma|^2 + \frac{\alpha_0 \gamma^2}{\nu} [\rho_s (|\xi'|^2 + A)^{-1} \rho_s] |\xi'|^2 |\sigma|^2 = \text{Re}(\bar{\sigma} h^0).$$

Since

$$|\xi'|^2(|\xi'|^2 + A)^{-1}\rho_s \rightarrow \rho_s \text{ in } L^2(0, 1) \text{ as } |\xi'| \rightarrow \infty$$

and

$$\begin{aligned} & (|\xi'|^2 + A)^{-1} \\ &= A^{-1} - A^{-2}|\xi'|^2 \sum_{N=0}^{\infty} (-1)^N |\xi'|^{2N} A^{-N} \text{ for } |\xi'| < 1, \end{aligned}$$

and since $[\rho_s(|\xi'|^2 + A)^{-1}\rho_s] = |(|\xi'|^2 + A)^{-\frac{1}{2}}\rho_s|_2^2$ is continuous in ξ' , we see that there exists a constant $\tilde{\alpha}_0 > 0$ such that

$$\frac{\alpha_0 \gamma^2}{\nu} [\rho_s(|\xi'|^2 + A)^{-1}\rho_s] |\xi'|^2 \geq \frac{\tilde{\alpha}_0 \gamma^2}{\nu} \min \{1, |\xi'|^2\}$$

for all ξ' .

Furthermore, since

$$|(|\xi'|^2 + A)^{-1}f|_2 \leq \frac{1}{|\xi'|^2 + 1} |f|_2,$$

a direct calculation gives

$$\begin{aligned} & |\operatorname{Re}(\bar{\sigma}h^0)| \\ & \leq \frac{\tilde{\gamma}^2}{\nu} \left(\frac{1}{4} + \frac{(\nu+\tilde{\nu})}{\gamma^4} + \frac{1}{\nu} \right) \min \{1, |\xi'|^2\} \\ & \quad + C \left\{ \left(\frac{\nu}{\gamma^2} + \frac{\gamma^2}{\nu} \right) (1 + |\xi'|^2) |\phi_1|_2^2 + \frac{\gamma^2}{\nu} |\sqrt{\rho_s} \partial_t w_1|_2^2 \right. \\ & \quad \left. + \frac{\gamma^2}{\nu} |w_1|_2^2 + \frac{\gamma^2}{\nu} \tilde{\nu}^2 |i\xi' \cdot w'_1 + \partial_{x_n} w_1^n|_2^2 \right\}. \end{aligned}$$

We thus find the desired estimate provided that $\frac{(\nu+\tilde{\nu})^2}{\gamma^4} + \frac{1}{\nu} \leq \frac{1}{2}$. This completes the proof. \square

We are now in a position to prove Proposition 4.2.

Proof of Proposition 4.2. For a given $R > 0$ we assume $|\xi'| \leq R$.

Let b_2 be a positive number (to be determined later) and define $E_2(u)$ by

$$\begin{aligned} E_2(u) &= \frac{\alpha_0}{\gamma^2} |\sigma|^2 + E_0(u_1) + \frac{b_2}{\nu+\tilde{\nu}} E_1(u) \\ & \quad + \frac{1}{\gamma^2} \left| \sqrt{\frac{\tilde{P}'(\rho_s)}{\gamma^2 \rho_s}} \partial_{x_n} \phi_1 \right|_2^2. \end{aligned}$$

We add (4.9) and $\frac{b_2}{\nu+\bar{\nu}} \times (4.14)$ to (4.24). Then

$$\begin{aligned}
& \frac{d}{dt} E_2(u) + \left(1 + \frac{b_2}{\nu+\bar{\nu}} + \frac{b_1 b_2 \gamma^2}{\nu(\nu+\bar{\nu})}\right) \tilde{D}_{\xi'}(w_1) \\
& + \frac{b_2}{\nu+\bar{\nu}} \left| \sqrt{\rho_s} \partial_t w_1 \right|_2^2 + \frac{1}{\nu+\bar{\nu}} \left| \frac{\tilde{P}'(\rho_s)}{\gamma^2} \partial_{x_n} \phi_1 \right|_2^2 \\
& \leq C \left\{ \left(\frac{\nu+\bar{\nu}}{\nu} |\omega|^2 + \frac{1}{\nu+\bar{\nu}} \left(\frac{1}{\nu} + |\xi'|^2 \right) \right) \tilde{D}_{\xi'}(w_1) \right. \\
& \quad + \frac{1}{\nu+\bar{\nu}} \left| \sqrt{\rho_s} \partial_t w_1 \right|_2^2 \\
& \quad + \left. \left(\frac{\nu+\bar{\nu}}{\gamma^4} + \frac{1}{\gamma^2} \right) \left((1 + |\xi'|^2) |\phi_1|_2^2 + |\xi'|^2 |\sigma|^2 \right) \right\} \\
& + C \frac{b_2}{\nu+\bar{\nu}} \left\{ \left(\frac{1}{\gamma^2} + \frac{1}{\nu} + \frac{\nu^2}{\gamma^4} \right) |\phi_1|_2^2 + \frac{1}{\gamma^2} |\xi'|^2 |\phi_1|_2^2 \right. \\
& \quad \left. + \left(\frac{\nu+\bar{\nu}}{\gamma^2} + \frac{1}{\nu} + \frac{1}{\gamma^2} \right) |\xi'|^2 |\sigma|^2 + \frac{(\nu+\bar{\nu})^2}{\gamma^4} |\xi'|^4 |\sigma|^2 \right\}.
\end{aligned}$$

Take $b_2 > 0$ so that $C \leq \frac{b_2}{2}$. Then $|\omega|$ is taken so small that $C \frac{\nu+\bar{\nu}}{\nu} |\omega|^2 \leq \frac{1}{4}$; and ν and $\frac{\gamma^2}{\nu}$ are taken so large that $\frac{C}{\nu} \leq \frac{b_2}{4}$ and $CR^2 \leq \frac{b_1 b_2 \gamma^2}{4 \nu}$. Then the terms $\tilde{D}_{\xi'}(w_1)$ and $\left| \sqrt{\rho_s} \partial_t w_1 \right|_2^2$ on the right are absorbed into the left. Since $|\phi_1|_2^2 \leq C_1 \left| \frac{\tilde{P}'(\rho_s)}{\gamma^2} \partial_{x_n} \phi_1 \right|_2^2$ for some $C_1 > 0$, we take γ^2 , ν and $\frac{\gamma^2}{\nu+\bar{\nu}}$ so large that $CC_1 \left(\frac{\nu+\bar{\nu}}{\gamma^4} + \frac{1}{\gamma^2} \right) (1 + R^2) \leq \frac{1}{4} \frac{1}{\nu+\bar{\nu}}$ and $CC_1 b_2 \left\{ \left(\frac{1}{\gamma^2} + \frac{1}{\nu} + \frac{\nu^2}{\gamma^4} \right) + \frac{R^2}{\gamma^2} \right\} \leq \frac{1}{4}$. Then the terms $|\phi_1|_2^2$ on the right are absorbed into the left. We thus arrive at

$$\begin{aligned}
& \frac{d}{dt} E_2(u) + \frac{1}{2} \left(1 + \frac{b_2}{\nu+\bar{\nu}} + \frac{b_1 b_2 \gamma^2}{\nu(\nu+\bar{\nu})}\right) \tilde{D}_{\xi'}(w_1) \\
(4.32) \quad & + \frac{1}{2} \frac{b_2}{\nu+\bar{\nu}} \left| \sqrt{\rho_s} \partial_t w_1 \right|_2^2 + \frac{1}{2} \frac{1}{\nu+\bar{\nu}} \left| \frac{\tilde{P}'(\rho_s)}{\gamma^2} \partial_{x_n} \phi_1 \right|_2^2 \\
& \leq C \left(\frac{\nu+\bar{\nu}}{\gamma^4} + \frac{1}{\nu(\nu+\bar{\nu})} + \frac{1}{\gamma^2} \right) |\xi'|^2 (1 + |\xi'|^2) |\sigma|^2.
\end{aligned}$$

Let b_3 be a positive number (to be determined later) and define $E_3(u)$ by

$$E_3(u) = E_2(u) + \frac{b_3 \nu}{\gamma^2 (\nu+\bar{\nu})} |\sigma|^2$$

We add $\frac{b_3\nu}{\gamma^2(\nu+\tilde{\nu})} \times (4.28)$ to (4.32). Then

$$\begin{aligned}
& \frac{d}{dt} E_3(u) + \frac{1}{2} \left(1 + \frac{b_2}{\nu+\tilde{\nu}} + \frac{b_1 b_2 \gamma^2}{\nu(\nu+\tilde{\nu})} \right) \tilde{D}_{\xi'}(w_1) \\
& + \frac{1}{2} \frac{b_2}{\nu+\tilde{\nu}} \left| \sqrt{\rho_s} \partial_t w_1 \right|_2^2 \\
& + \frac{1}{2} \frac{1}{\nu+\tilde{\nu}} \left| \frac{\tilde{P}'(\rho_s)}{\gamma^2} \partial_{x_n} \phi_1 \right|_2^2 + \frac{b_3 \tilde{\alpha}_0}{\nu+\tilde{\nu}} \min \{1, |\xi'|^2\} |\sigma|^2 \\
& \leq C \left(\frac{\nu+\tilde{\nu}}{\gamma^4} + \frac{1}{\nu(\nu+\tilde{\nu})} + \frac{1}{\gamma^2} \right) |\xi'|^2 (1 + |\xi'|^2) |\sigma|^2 \\
& + C \frac{b_3 \nu}{\gamma^2(\nu+\tilde{\nu})} \left\{ \left(\frac{\nu}{\gamma^2} + \frac{\gamma^2}{\nu} \right) (1 + |\xi'|^2) |\phi_1|_2^2 \right. \\
& \quad \left. + \frac{\gamma^2}{\nu} \left| \sqrt{\rho_s} \partial_t w_1 \right|_2^2 + \frac{\gamma^2}{\nu} (1 + \tilde{\nu}) \tilde{D}_{\xi'}(w_1) \right\}.
\end{aligned}$$

We may assume $\nu \geq 1$ and $\frac{\nu}{\gamma^2} \leq 1$. We take b_3 so small that $Cb_3 \leq \frac{1}{4}$, $Cb_3 \leq \frac{b_2}{4}$ and $CC_1 b_3 \left(1 + \frac{\nu^2}{\gamma^4} \right) (1 + R^2) \leq \frac{1}{4}$. Then the terms $\tilde{D}_{\xi'}(w_1)$, $\left| \sqrt{\rho_s} \partial_t w_1 \right|_2^2$ and $|\phi_1|_2^2$ on the right are absorbed into the left. We finally take $\frac{\gamma^2}{\nu+\tilde{\nu}}$ and ν so large that $C \left(\frac{\nu+\tilde{\nu}}{\gamma^4} + \frac{1}{\nu(\nu+\tilde{\nu})} + \frac{1}{\gamma^2} \right) (1 + R^2) \max \{1, R^2\} \leq \frac{b_3 \tilde{\alpha}_0}{2(\nu+\tilde{\nu})}$. We then arrive at

$$\begin{aligned}
(4.33) \quad & \frac{d}{dt} E_3(u) + \frac{1}{4} \left(1 + \frac{b_2}{\nu+\tilde{\nu}} + \frac{b_1 b_2 \gamma^2}{\nu(\nu+\tilde{\nu})} \right) \tilde{D}_{\xi'}(w_1) \\
& + \frac{1}{4} \frac{b_2}{\nu+\tilde{\nu}} \left| \sqrt{\rho_s} \partial_t w_1 \right|_2^2 + \frac{1}{4} \frac{1}{\nu+\tilde{\nu}} \left| \frac{\tilde{P}'(\rho_s)}{\gamma^2} \partial_{x_n} \phi_1 \right|_2^2 \\
& + \frac{b_3 \tilde{\alpha}_0}{2(\nu+\tilde{\nu})} \min \{1, |\xi'|^2\} |\sigma|^2 \\
& \leq 0
\end{aligned}$$

for all ξ' with $|\xi'| \leq R$.

Since

$$\tilde{D}_{\xi'}(w_1) + \left| \frac{\tilde{P}'(\rho_s)}{\gamma^2} \partial_{x_n} \phi_1 \right|_2^2 + |\sigma|^2 \geq c_0 E_3(u)$$

for some constant $c_0 > 0$, we see that there exists a constant $\tilde{c}_0 > 0$ such that

$$\frac{d}{dt} E_3(u) + \tilde{c}_0 \min \{1, |\xi'|^2\} E_3(u) \leq 0.$$

It then follows

$$(4.34) \quad E_3(u)(t) \leq e^{-\tilde{c}_0 \min \{1, |\xi'|^2\} (t-1)} E_3(u)(1).$$

Let $\widehat{u} = {}^T(\widehat{\phi}, \widehat{w})$ be the solution of problem (4.1)–(4.5). Since $E_3(u) \geq c_1|u|_{H^1}$ for some constant $c_1 > 0$, we see from (4.34) that

$$(4.35) \quad \begin{aligned} & |\xi'|^{2k} |\widehat{u}(\xi', \cdot, t)|_{H^1}^2 \\ & \leq C |\xi'|^{2k} e^{-\tilde{c}_0 \min\{1, |\xi'|^2\}(t-1)} E_3(\widehat{u}(\xi', \cdot, 1)) \end{aligned}$$

for ξ' with $|\xi'| \leq R$. Integrating this over $|\xi'| \leq R$, we obtain

$$(4.36) \quad \begin{aligned} & \|\partial_{x'}^k U_1(t) u_0\|_{L^2(\mathbf{R}^{n-1}; H^1(0,1))}^2 \\ & \leq C(t-1)^{-\frac{n-1}{2}-k} \sup_{|\xi'| \leq R} E_3(\widehat{u}(\xi', \cdot, 1)). \end{aligned}$$

But, similarly to the proof of Theorem 3.1 (see [11]), we can show that

$$\sup_{|\xi'| \leq R} E_3(\widehat{u}(\xi', \cdot, 1)) \leq C \|u_0\|_{L^1(\mathbf{R}^{n-1}; L^2(0,1))}^2.$$

This, together with (4.36), gives the desired estimate in Proposition 4.2. This completes the proof. \square

5. Outline of Proof of Theorem 3.3

Once the estimate (4.35) is established for the bounded frequency part, Theorem 3.3 can be proved in a similar manner to the case of the plane Couette flow [11]. So we here give an outline of the proof.

To prove Theorem 3.3 we further decompose $U_1(t)u_0$ into two parts. Let $0 < r < R$. We define $\chi^{(0)}(\xi')$ by

$$\chi^{(0)}(\xi') = 1 \text{ if } |\xi'| \leq r, \quad \chi^{(0)}(\xi') = 0 \text{ if } |\xi'| \geq r.$$

We decompose $U_1(t)u_0$ as

$$U_1(t)u_0 = U_0(t)u_0 + U_{1,\infty}(t)u_0,$$

where

$$U_0(t)u_0 = \mathcal{F}^{-1} \left(\chi^{(0)} \chi^{(1)} e^{-t\widehat{L}_{\xi'}} \widehat{u}_0 \right)$$

and

$$U_{1,\infty}(t)u_0 = \mathcal{F}^{-1} \left((1 - \chi^{(0)}) \chi^{(1)} e^{-t\widehat{L}_{\xi'}} \widehat{u}_0 \right).$$

We have the following estimates.

Proposition 5.1. (i) *For each r and R satisfying $0 < r < R$ there exist $\nu_0 > 0$, $\gamma_0 > 0$ and $\omega_0 > 0$ such that if $\nu \geq \nu_0$, $(\nu + \tilde{\nu})/\gamma^2 \leq 1/\gamma_0^2$ and*

$|\omega| \leq \omega_0$, then $U_{1,\infty}(t)u_0$ satisfies the estimate (3.5) in Theorem 3.3 (ii) with $\mathcal{U}^{(\infty)}(t)u_0$ replaced by $U_{1,\infty}(t)u_0$ for a constant $d = d(r) > 0$.

(ii) There exist $r_0 > 0$, $\nu_0 > 0$, $\gamma_0 > 0$ and $\omega_0 > 0$ such that if $r \leq r_0$, $\nu \geq \nu_0$, $(\nu + \tilde{\nu})/\gamma^2 \leq 1/\gamma_0^2$ and $|\omega| \leq \omega_0$, then $U_0(t)u_0$ is written as

$$U_0(t)u_0 = \mathcal{U}^{(0)}(t)u_0 + \mathcal{R}^{(0)}(t)u_0,$$

where $\mathcal{U}^{(0)}(t)u_0$ has the properties in Theorem 3.3 (i) and $\mathcal{R}^{(0)}(t)u_0$ satisfies the estimate (3.5) in Theorem 3.3 (ii) with $\mathcal{U}^{(\infty)}(t)u_0$ replaced by $\mathcal{R}^{(0)}(t)u_0$.

Theorem 3.3 immediately follows from Proposition 4.1 and Proposition 5.1 with $r = r_0$ and $R = R_0$ by setting $\mathcal{U}^{(\infty)}(t)u_0 = \mathcal{R}^{(0)}(t)u_0 + U_{1,\infty}(t)u_0 + U_\infty(t)u_0$. So we will give an outline of the proof of Proposition 5.1.

Proposition 5.1 (i) follows from (4.35); if we integrate (4.35) over $0 < r \leq |\xi'| \leq R$, then

$$\|U_0(t)u_0\|_{H^1} \leq Ce^{-d(t-1)}\|\mathcal{U}(1)u_0\|_{H^1}$$

with $d = \frac{1}{2}\tilde{c}_0 \min\{1, r^2\} > 0$. Applying Theorem 3.1 to estimate $\|\mathcal{U}(1)u_0\|_{H^1}$, we have the desired estimate.

Proposition 5.1 (ii) follows from Lemma 5.4, Theorems 5.5 and 5.6 below. To prove Proposition 5.1 (ii) we first investigate the spectrum of $-\widehat{L}_0$, and, then, by perturbation argument, we analyze the spectrum of $-\widehat{L}_{\xi'}$ for $|\xi'| \ll 1$.

We consider the resolvent problem

$$(5.1) \quad \lambda u + \widehat{L}_{\xi'}u = f,$$

where $\lambda \in \mathbf{C}$ is the resolvent parameter; $u = {}^T(\phi, w', w^n)$ is an unknown function of $x_n \in [0, 1]$; and $f = {}^T(f^0, g', g^n)$ is a given function of $x_n \in [0, 1]$. To investigate problem (5.2) we write $\widehat{L}_{\xi'}$ in the following form:

$$\widehat{L}_{\xi'} = \widehat{L}_0 + \sum_{j=1}^{n-1} \xi_j \widehat{L}_j^{(1)} + \sum_{j,k=1}^{n-1} \xi_j \xi_k \widehat{L}_{jk}^{(2)},$$

where $\xi' = {}^T(\xi_1, \dots, \xi_{n-1})$, and

$$\widehat{L}_0 = \begin{pmatrix} 0 & 0 & \gamma^2 \partial_{x_n}(\rho_s \cdot) \\ -\frac{\nu}{\gamma^2 \rho_s} \mathbf{e}'_1 & -\frac{\nu}{\rho_s} \partial_{x_n}^2 I_{n-1} & (\partial_{x_n} v_s^1) \mathbf{e}'_1 \\ \partial_{x_n} \left(\frac{\tilde{P}'(\rho_s)}{\gamma^2 \rho_s} \cdot \right) & 0 & -\frac{\nu + \tilde{\nu}}{\rho_s} \partial_{x_n}^2 \end{pmatrix},$$

$$\widehat{L}_j^{(1)} = \begin{pmatrix} iv_s^1 \delta_{1j} & i\gamma^2 \rho_s^T \mathbf{e}'_j & 0 \\ i \frac{\tilde{P}'(\rho_s)}{\gamma^2 \rho_s} \mathbf{e}'_j & iv_s^1 \delta_{1j} I_{n-1} & -i \frac{\tilde{\nu}}{\rho_s} \mathbf{e}'_j \partial_{x_n} \\ 0 & -i \frac{\tilde{\nu}}{\rho_s} \mathbf{e}'_j \partial_{x_n} & iv_s^1 \delta_{1j} \end{pmatrix},$$

$$\widehat{L}_{jk}^{(2)} = \begin{pmatrix} 0 & 0 & 0 \\ 0 & \frac{\nu}{\rho_s} \delta_{jk} I_{n-1} + \frac{\tilde{\nu}}{\rho_s} \mathbf{e}'_j{}^T \mathbf{e}'_k & 0 \\ 0 & 0 & \frac{\nu}{\rho_s} \delta_{jk} \end{pmatrix}.$$

Here \mathbf{e}'_j denotes the unit vector of \mathbf{R}^{n-1} in ξ_j -direction.

We will treat $\widehat{L}_{\xi'}$ as a perturbation from \widehat{L}_0 . As for the case $\xi' = 0$ we have the following result.

Lemma 5.2. (i) *There exist positive numbers η_0 and θ_0 with $\theta_0 \in (\frac{\pi}{2}, \pi)$ such that $\Sigma(-\eta_0, \theta_0) \setminus \{0\} \subset \rho(-\widehat{L}_0)$. Furthermore, the following estimates hold uniformly for $\lambda \in \rho(-\widehat{L}_0) \cap \Sigma(-\eta_0, \theta_0) \setminus \{0\}$:*

$$\left| (\lambda + \widehat{L}_0)^{-1} f \right|_{H^1 \times L^2} \leq \frac{C}{|\lambda|} |f|_{H^1 \times L^2},$$

$$\left| \partial_{x_n}^l \widetilde{Q}(\lambda + \widehat{L}_0)^{-1} f \right|_2 \leq C \left(\frac{1}{|\lambda|} + \frac{1}{(|\lambda|+1)^{1-\frac{l}{2}}} \right) |f|_{H^1 \times L^2}$$

for $l = 1, 2$,

$$\left| \partial_{x_n}^2 Q_0(\lambda + \widehat{L}_0)^{-1} f \right|_2 \leq C \left(\frac{1}{|\lambda|} + \frac{1}{(|\lambda|+1)^{\frac{1}{2}}} \right) |f|_{H^2 \times H^1}.$$

The same assertion also holds for $-\widehat{L}_0^*$.

(ii) $\lambda = 0$ is a simple eigenvalue of $-\widehat{L}_0$ and $-\widehat{L}_0^*$; and the associated eigenprojections are given by the ones given in Lemma 4.3 (iii).

Proof. Lemma 5.2 can be proved by the energy method as in section 4 and the proof of [13, Proposition 3.15], or by a perturbation argument from the case $\omega = 0$. We here give an outline of the latter argument.

Since \widehat{L}_0 depends on ω through ρ_s (recall that $\rho_s = 1 + O(\omega)$), we introduce the notation $\widehat{\mathcal{L}}_\omega$:

$$\widehat{\mathcal{L}}_\omega = \widehat{A}_0 + \widehat{B}_0.$$

Then we have

$$\widehat{L}_0 = \widehat{A}_0 + \widehat{B}_0 + \widehat{C}_0 = \widehat{\mathcal{L}}_\omega + \widehat{C}_0.$$

Although \widehat{C}_0 also depends on ω , we keep the same notation for it. In terms of $\widehat{\mathcal{L}}_\omega$, problem (5.2) is written as

$$\lambda u + \widehat{\mathcal{L}}_\omega u = f - \widehat{C}_0 u,$$

namely,

$$(5.3) \quad \lambda \phi + \gamma^2 \partial_{x_n} (\rho_s w^n) = f^0,$$

$$(5.4) \quad \lambda w' - \frac{\nu}{\rho_s} \partial_{x_n}^2 w' = g' + \frac{\nu}{\gamma^2 \rho_s} \phi e'_1 - (\partial_{x_n} v_s^1) w^n e'_1,$$

$$(5.5) \quad \lambda w^n - \frac{\nu + \bar{\nu}}{\rho_s} \partial_{x_n}^2 w^n + \partial_{x_n} \left(\frac{\tilde{P}'(\rho_s)}{\gamma^2 \rho_s} \phi \right) = g^n$$

with the boundary condition

$$w|_{x_n=0,1} = 0.$$

We see from (5.2) and (5.4) that ϕ and w^n do not couple with w' and they are determined by f^0 and g^n . Once ϕ and w^n are known, then w' is obtained by inverting (5.3). In view of this observation, we have

$$(5.6) \quad u = (\lambda + \widehat{\mathcal{L}}_\omega)^{-1} f - \widehat{C}_0 (\lambda + \widehat{\mathcal{L}}_\omega)^{-1} f.$$

Here we have used $Q'(\lambda + \widehat{\mathcal{L}}_\omega)^{-1} = (\lambda + \widehat{\mathcal{L}}_\omega)^{-1} Q'$ and $\widehat{C}_0 = Q' \widehat{C}_0 = \widehat{C}_0 (Q_0 + Q_n)$, where $Q' = I - (Q_0 + Q_n)$. Therefore, estimates on $(\lambda + \widehat{\mathcal{L}}_\omega)^{-1}$ will lead to the desired estimates on $u = (\lambda + \widehat{\mathcal{L}}_\omega)^{-1} f$.

We regard $\widehat{\mathcal{L}}_\omega$ as a perturbation from $\widehat{\mathcal{L}}_0$ to estimate $(\lambda + \widehat{\mathcal{L}}_\omega)^{-1}$. As for $\widehat{\mathcal{L}}_0$ we have the following result.

Lemma 5.3. (i) *There exist positive numbers η_0 and θ_0 with $\theta_0 \in (\frac{\pi}{2}, \pi)$ such that $\Sigma(-\eta_0, \theta_0) \setminus \{0\} \subset \rho(-\widehat{\mathcal{L}}_0)$. Furthermore, the following estimates hold uniformly for $\lambda \in \rho(-\widehat{\mathcal{L}}_0) \cap \Sigma(-\eta_0, \theta_0) \setminus \{0\}$ and $l = 0, 1$:*

$$\left| (\lambda + \widehat{\mathcal{L}}_0)^{-1} f \right|_{H^l \times L^2} \leq \frac{C}{|\lambda|} |f|_{H^l \times L^2},$$

$$\left| \partial_{x_n}^l \widetilde{Q} (\lambda + \widehat{\mathcal{L}}_0)^{-1} f \right|_2 \leq \frac{C}{(|\lambda|+1)^{1-\frac{l}{2}}} \left(1 + \frac{1}{|\lambda|} \right) |f|_{H^{l-1} \times L^2}.$$

(ii) $\lambda = 0$ is a simple eigenvalue of $-\widehat{\mathcal{L}}_0$.

Lemma 5.3 was given in [11], which can be proved in a similar manner to the proof of [9, Lemmas 3.1 and 3.2].

We continue the proof of Lemma 5.2. Since ρ_s is smooth, strictly positive, and $\rho_s = 1 + O(\omega)$, we have

$$\left| (\widehat{\mathcal{L}}_\omega - \widehat{\mathcal{L}}_0)u \right|_{H^1 \times L^2} \leq C|\omega||u|_{H^1 \times H^2}.$$

This, together with Lemma 5.3, implies that if $|\omega| \ll 1$, then $\Sigma(-\frac{\eta_0}{2}, \theta_0) \cap \{|\lambda| \geq \frac{\eta_0}{2}\} \subset \rho(-\widehat{\mathcal{L}}_\omega)$ and

$$\left| (\lambda + \widehat{\mathcal{L}}_\omega)^{-1}f \right|_{H^1 \times L^2} \leq \frac{C}{|\lambda|}|f|_{H^1 \times L^2},$$

$$\left| \partial_{x_n}^l \widetilde{Q}(\lambda + \widehat{\mathcal{L}}_\omega)^{-1}f \right|_2 \leq C \left(\frac{1}{|\lambda|} + \frac{1}{(|\lambda|+1)^{1-\frac{l}{2}}} \right) |f|_{H^1 \times L^2}$$

for $l = 1, 2$. Furthermore, in view of the proof of Lemma 4.3, one can find that $\lambda = 0$ is a simple eigenvalue and $\sigma(-\widehat{\mathcal{L}}_\omega) \cap \{|\lambda| < \frac{\eta_0}{2}\} = \{0\}$. Lemma 5.2 now follows from (5.6), except the estimate on $\partial_{x_n}^2 Q_0(\lambda + \widehat{L}_0)^{-1}f$.

Let us estimate $\partial_{x_n}^2 Q_0(\lambda + \widehat{L}_0)^{-1}f$. As in the proof of (4.27), one can obtain

$$\lambda \partial_{x_n} \phi + \frac{\rho_s \widetilde{P}'(\rho_s)}{\nu + \widetilde{\nu}} \partial_{x_n} \phi = H,$$

where

$$\begin{aligned} H &= -\gamma^2 \partial_{x_n} (w^n \partial_{x_n} \rho_s) + \partial_{x_n} f^0 \\ &\quad - \frac{\gamma^2 \rho_s^2}{\nu + \widetilde{\nu}} \left\{ \lambda w^n + \phi \partial_{x_n} \left(\frac{\widetilde{P}'(\rho_s)}{\gamma^2 \rho_s} \right) - g^n \right\}. \end{aligned}$$

It follows that

$$\left(\lambda + \frac{\gamma^2}{\nu + \widetilde{\nu}} \right) \partial_{x_n} \phi = \frac{\gamma^2}{\nu + \widetilde{\nu}} \left(1 - \frac{\rho_s \widetilde{P}'(\rho_s)}{\gamma^2} \right) \partial_{x_n} \phi + H.$$

Since $\rho_s = 1 + O(\omega)$ and $\gamma^2 = \widetilde{P}'(1)$, we obtain, for $|\omega| \ll 1$,

$$\begin{aligned} &|\partial_{x_n}^2 \phi|_2 \\ &\leq \frac{C}{|\lambda|+1} \{ |\omega| |\partial_{x_n}^2 \phi|_2 + |\phi|_{H^1} + |\partial_{x_n} H|_2 \} \\ &\leq \frac{1}{2} |\partial_{x_n}^2 \phi|_2 \\ &\quad + \frac{C}{|\lambda|+1} \{ |\phi|_{H^1} + |w|_{H^2} + |\lambda| |w|_{H^1} + |f|_{H^2 \times H^1} \} \\ &\leq \frac{1}{2} |\partial_{x_n}^2 \phi|_2 + C \left(\frac{1}{|\lambda|} + \frac{1}{(|\lambda|+1)^{\frac{1}{2}}} \right) |f|_{H^2 \times H^1}, \end{aligned}$$

from which the desired estimate on $\partial_{x_n}^2 Q_0(\lambda + \widehat{L}_0)^{-1}f$ follows. This completes the proof. \square

Based on Lemma 5.2, we can obtain the following estimates on $(\lambda + \widehat{L}_{\xi'})^{-1}$ for $|\xi'| \ll 1$, by changing η_0 and θ_0 suitably if necessary.

Lemma 5.4. *There exists a positive number $r_0 = r_0(\eta_0, \theta_0)$ such that the set $\Sigma(-\eta_0, \theta_0) \cap \{\lambda; |\lambda| \geq \frac{\eta_0}{2}\}$ is in $\rho(-\widehat{L}_{\xi'})$ for $|\xi'| \leq r_0$. Furthermore, the following estimates hold uniformly in $\lambda \in \Sigma(-\eta_0, \theta_0) \cap \{\lambda; |\lambda| \geq \frac{\eta_0}{2}\}$ and ξ' with $|\xi'| \leq r_0$:*

$$\left| (\lambda + \widehat{L}_{\xi'})^{-1} f \right|_{H^1 \times L^2} \leq \frac{C}{|\lambda|} |f|_{H^1 \times L^2},$$

$$\left| \partial_{x_n}^l \widetilde{Q}(\lambda + \widehat{L}_{\xi'})^{-1} f \right|_2 \leq C \left(\frac{1}{|\lambda|} + \frac{1}{(|\lambda|+1)^{1-\frac{l}{2}}} \right) |f|_{H^1 \times L^2}$$

for $l = 1, 2$,

$$\left| \partial_{x_n}^2 Q_0(\lambda + \widehat{L}_{\xi'})^{-1} f \right|_2 \leq C \left(\frac{1}{|\lambda|} + \frac{1}{(|\lambda|+1)^{\frac{1}{2}}} \right) |f|_{H^2 \times H^1}.$$

The same assertion also holds for $-\widehat{L}_{\xi'}^*$.

The proof of Lemma 5.4 is the same as that of [11, Theorem 5.2].

As for the spectrum of $-\widehat{L}_{\xi'}$ near $\lambda = 0$, we have the following result.

Theorem 5.5. *There exists a positive number r_0 such that for each ξ' with $|\xi'| \leq r_0$ it holds that*

$$\sigma(-\widehat{L}_{\xi'}) \cap \{\lambda; |\lambda| < \frac{\eta_0}{2}\} = \{\lambda_0(\xi')\},$$

where $\lambda_0(\xi')$ is a simple eigenvalue of $-\widehat{L}_{\xi'}$ that has the form

$$\lambda_0(\xi') = -i\kappa_0 - \kappa_1 \xi_1^2 - \kappa_2 |\xi''|^2 + O(|\xi'|^3)$$

as $|\xi'| \rightarrow 0$. Here $\xi'' = (\xi_2, \dots, \xi_{n-1})$; and κ_j ($j = 0, 1, 2$) are some positive numbers having the properties given in Theorem 3.3 (i).

Proof. Theorem 5.5 is proved by applying the analytic perturbation theory [14]. We here derive the asymptotics of $\lambda_0(\xi')$ only.

We proceed as in [11]. Since $\lambda_0(\xi')$ is simple, we can see that $\lambda_0(\xi')$ and $\widehat{H}(\xi')$ are expanded as

$$\lambda_0(\xi') = \lambda^{(0)} + \sum_{j=1}^{n-1} \xi_j \lambda_j^{(1)} + \sum_{j,k=1}^{n-1} \xi_j \xi_k \lambda_{jk}^{(2)} + O(|\xi'|^3),$$

$$\widehat{H}(\xi') = \widehat{H}^{(0)} + \sum_{j=1}^{n-1} \xi_j \widehat{H}_j^{(1)} + O(|\xi'|^2)$$

with $\lambda^{(0)} = 0$ and

$$\begin{aligned} \lambda_j^{(1)} &= -\langle \widehat{L}_j^{(1)} u^{(0)}, u^{(0)*} \rangle = -[Q_0 \widehat{L}_j^{(1)} u^{(0)}], \\ \lambda_{jk}^{(2)} &= -\langle \widehat{L}_{jk}^{(2)} u^{(0)}, u^{(0)*} \rangle + \langle \widehat{L}_j^{(1)} \widehat{S} \widehat{L}_k^{(1)} u^{(0)}, u^{(0)*} \rangle \\ &= -[Q_0 \widehat{L}_{jk}^{(2)} u^{(0)}, u^{(0)}] + [Q_0 \widehat{L}_j^{(1)} \widehat{S} \widehat{L}_k^{(1)} u^{(0)}], \\ \widehat{H}_j^{(1)} &= -\widehat{H}^{(0)} \widehat{L}_j^{(1)} \widehat{S} - \widehat{S} \widehat{L}_j^{(1)} \widehat{H}^{(0)}, \end{aligned}$$

where $\widehat{S} = \left((I - \widehat{H}^{(0)}) \widehat{L}_0 (I - \widehat{H}^{(0)}) \right)^{-1}$.

Since $\frac{\tilde{P}'(\rho_s)}{\gamma^2 \rho_s} \phi^{(0)} = \alpha_0$, we have

$$(5.7) \quad \widehat{L}_j^{(1)} u^{(0)} = i \begin{pmatrix} v_s^1 \phi^{(0)} \delta_{1j} + \gamma^2 \rho_s w^{(0),1} \delta_{1j} \\ \alpha_0 \mathbf{e}'_j + v_s^1 w^{(0),1} \delta_{1j} \mathbf{e}'_j \\ -\frac{\tilde{\nu}}{\rho_s} \partial_{x_n} w^{(0),1} \delta_{1j} \end{pmatrix}.$$

It follows that

$$\begin{aligned} \lambda_j^{(1)} &= -[Q_0 \widehat{L}_j^{(1)} u^{(0)}] = -i[v_s^1 \phi^{(0)} \delta_{1j} + \gamma^2 \rho_s w^{(0),1} \delta_{1j}] \\ &= -i \left(\frac{1}{6} + O(\omega) \right) \delta_{1j}. \end{aligned}$$

We next compute $\lambda_{jk}^{(2)}$. Since $Q_0 \widehat{L}_{jk}^{(2)} = 0$, we have

$$\langle \widehat{L}_{jk}^{(2)} u^{(0)}, u^{(0)*} \rangle = [Q_0 \widehat{L}_{jk}^{(2)} u^{(0)}] = 0.$$

Let $j \geq 2$. Then it follows from (5.7) that

$$\widehat{S} \widehat{L}_j^{(1)} u^{(0)} = \begin{pmatrix} 0 \\ i \frac{\alpha_0}{\nu} (-\partial_{x_n}^2)^{-1} \rho_s \mathbf{e}'_j \\ 0 \end{pmatrix}.$$

We thus find that if $k \neq j$, then

$$\widehat{L}_k^{(1)} \widehat{S} \widehat{L}_j^{(1)} u^{(0)} = \begin{pmatrix} 0 \\ * \\ * \end{pmatrix},$$

which implies that

$$\langle \widehat{L}_k^{(1)} \widehat{S} \widehat{L}_j^{(1)} u^{(0)}, u^{(0)*} \rangle = [Q_0 \widehat{L}_k^{(1)} \widehat{S} \widehat{L}_j^{(1)} u^{(0)}] = 0.$$

Therefore, $\lambda_{kj}^{(2)} = 0$ for $j \geq 2$ and $k \neq j$.

Furthermore, we have

$$\widehat{L}_j^{(1)} \widehat{S} \widehat{L}_j^{(1)} u^{(0)} = \begin{pmatrix} -\frac{\alpha_0 \gamma^2}{\nu} \rho_s (-\partial_{x_n}^2)^{-1} \rho_s \\ * \\ * \end{pmatrix},$$

and, hence,

$$\begin{aligned} \langle \widehat{L}_j^{(1)} \widehat{S} \widehat{L}_j^{(1)} u^{(0)}, u^{(0)*} \rangle &= [Q_0 \widehat{L}_j^{(1)} \widehat{S} \widehat{L}_j^{(1)} u^{(0)}] \\ &= -[\frac{\alpha_0 \gamma^2}{\nu} \rho_s (-\partial_{x_n}^2)^{-1} \rho_s] \\ &= -\frac{\alpha_0 \gamma^2}{\nu} |(-\partial_{x_n}^2)^{-\frac{1}{2}} \rho_s|_2^2 < 0. \end{aligned}$$

Since $-\frac{\alpha_0 \gamma^2}{\nu} |(-\partial_{x_n}^2)^{-\frac{1}{2}} \rho_s|_2^2 = -\frac{\gamma^2}{12\nu} (1 + O(\omega))$, we obtain

$$\lambda_{jj}^{(2)} = -\kappa_2, \quad \kappa_2 = \frac{\gamma^2}{12\nu} (1 + O(\omega)) > 0$$

for $j \geq 2$.

We next consider λ_{k1} . Let us compute $\widehat{S} \widehat{L}_1^{(1)} u^{(0)}$. We first note that $(I - \widehat{\Pi}^{(0)}) \widehat{L}_1^{(1)} u^{(0)} = \lambda_1^{(1)} u^{(0)} + \widehat{L}_1^{(1)} u^{(0)}$. Let $\tilde{u}^{(1)} = T(\tilde{\phi}^{(1)}, \tilde{w}^{(1)'}, \tilde{w}^{(1),n})$ be a solution of

$$\widehat{L}^{(0)} \tilde{u}^{(1)} = (I - \widehat{\Pi}^{(0)}) \widehat{L}_1^{(1)} u^{(0)} = \lambda_1^{(1)} u_0 + \widehat{L}_1^{(1)} u^{(0)}.$$

Then

$$\left\{ \begin{array}{l} \gamma^2 \partial_{x_n} (\rho_s \tilde{w}^{(1),n}) = \lambda_1^{(1)} \phi^{(0)} + i v_s^1 \phi^{(0)} + i \gamma^2 w^{(0),1}, \\ -\frac{\nu}{\rho_s} \partial_{x_n}^2 \tilde{w}^{(1)'} - \frac{\nu}{\gamma^2 \rho_s} \tilde{\phi}^{(1)} \mathbf{e}'_1 + (\partial_{x_n} v_s^1) \tilde{w}^{(1),n} \mathbf{e}'_1 \\ \quad = (\lambda_1^{(1)} w^{(0),1} + i \frac{\tilde{P}'(\rho_s)}{\gamma^2 \rho_s} \phi^{(0)} + i v_s^1 w^{(0),1}) \mathbf{e}'_1, \\ -\frac{\nu + \tilde{\nu}}{\rho_s} \partial_{x_n}^2 \tilde{w}^{(1),n} + \partial_{x_n} \left(\frac{\tilde{P}'(\rho_s)}{\gamma^2 \rho_s} \tilde{\phi}^{(1)} \right) = -i \frac{\tilde{\nu}}{\rho_s} \partial_{x_n} w^{(0),1}, \\ \tilde{w}^{(1)}|_{x_n=0,1} = 0. \end{array} \right.$$

From the first equation we see that

$$\tilde{w}^{(1),n} = O\left(\frac{1}{\gamma^2}\right)(1 + O(\omega)),$$

and, then, by the third equation,

$$\tilde{\phi}^{(1)} = \left(O\left(\frac{\nu+\bar{\nu}}{\gamma^2}\right) + O\left(\frac{\bar{\nu}}{\gamma^2}\right) \right) (1 + O(\omega)).$$

Since $\frac{\tilde{P}'(\rho_s)}{\gamma^2 \rho_s} \phi^{(0)} = \alpha_0$, it follows from the second equation that

$$\tilde{w}^{(1)'} = i \frac{\alpha_0}{\nu} (-\partial_{x_n}^2)^{-1} \rho_s e'_1 + \left(O\left(\frac{\nu+\bar{\nu}}{\gamma^4}\right) + O\left(\frac{1}{\nu\gamma^2}\right) \right) (1 + O(\omega)).$$

In terms of $\tilde{u}^{(1)}$, $\widehat{S}\widehat{L}_1^{(1)}u^{(0)}$ is given by

$$\widehat{S}\widehat{L}_1^{(1)}u^{(0)} = (I - \Pi^{(0)})\tilde{u}^{(1)} = \tilde{u}^{(1)} - [\tilde{\phi}^{(1)}]u^{(0)}.$$

Therefore,

$$\begin{aligned} & \langle \widehat{L}_1^{(1)}\widehat{S}\widehat{L}_1^{(1)}u^{(0)}, u^{(0)*} \rangle \\ &= [Q_0\widehat{L}_1^{(1)}\widehat{S}\widehat{L}_1^{(1)}u^{(0)}] \\ &= -\frac{\alpha_0\gamma^2}{\nu} |(-\partial_{x_n}^2)^{-\frac{1}{2}}\rho_s|_2^2 \\ &\quad + \left(O\left(\frac{\nu+\bar{\nu}}{\gamma^2}\right) + O\left(\frac{1}{\nu}\right) \right) (1 + O(\omega)) \\ &= -\left(\frac{\gamma^2}{12\nu} + O\left(\frac{\nu+\bar{\nu}}{\gamma^2}\right) + O\left(\frac{1}{\nu}\right) \right) (1 + O(\omega)). \end{aligned}$$

We thus conclude

$$\lambda_{11}^{(2)} = -\kappa_1, \quad \kappa_1 = \left(\frac{\gamma^2}{12\nu} + O\left(\frac{\nu+\bar{\nu}}{\gamma^2}\right) + O\left(\frac{1}{\nu}\right) \right) (1 + O(\omega)).$$

One can see that $\kappa_1 > 0$ if $\frac{\nu+\bar{\nu}}{\gamma^2}$ and $\frac{1}{\nu}$ are sufficiently small, and the desired asymptotics of $\lambda(\xi')$ is obtained.

We finally give estimates on the eigenprojection $\widehat{\Pi}(\xi')$ for $\lambda_0(\xi')$, which can be obtained exactly in a similar manner to the proof of [11, Theorem 5.4].

Theorem 5.6. (i) *Let $\widehat{\Pi}(\xi')$ be the eigenprojection associated with $\lambda_0(\xi')$. Then there exists a positive number r_0 such that for any ξ' with $|\xi'| \leq r_0$ the projection $\widehat{\Pi}(\xi')$ is written in the form*

$$\widehat{\Pi}(\xi')u = \int_0^1 \widehat{\Pi}(\xi', x_n, y_n)u(y_n) dy_n$$

with

$$\widehat{\Pi}(\xi', x_n, y_n) = \widehat{\Pi}^{(0)} + \sum_{j=1}^{n-1} \xi_j \widehat{\Pi}_j^{(1)}(x_n, y_n) + \widehat{\Pi}^{(2)}(\xi', x_n, y_n).$$

Here $\widehat{\Pi}^{(0)} = Q_0$; and $\widehat{\Pi}_j^{(1)}(x_n, y_n)$ ($j = 1, \dots, n-1$) and $\widehat{\Pi}^{(2)}(\xi', x_n, y_n)$ satisfy

$$\begin{aligned} \left| \partial_{x_n}^k \partial_{y_n}^l \widehat{\Pi}_j^{(1)}(\cdot, \cdot) \right|_{L^\infty((0,1) \times (0,1))} &\leq C, \\ \left| \partial_{x_n}^k \partial_{y_n}^l \widehat{\Pi}^{(2)}(\xi', \cdot, \cdot) \right|_{L^\infty((0,1) \times (0,1))} &\leq C |\xi'|^2 \end{aligned}$$

for $0 \leq k, l \leq 1$ uniformly in ξ' with $|\xi'| \leq r_0$.

(ii) If $Q_0 u|_{x_n=0,1} = 0$, then $\widehat{\Pi}(\xi')$ satisfies

$$\begin{aligned} \widehat{\Pi}(\xi') (\partial_{x_n} u) &= - \left(\partial_{y_n} \widehat{\Pi}(\xi') \right) u, \\ \widehat{\Pi}^{(0)} (\partial_{x_n} u) &= 0, \\ \widehat{\Pi}_j^{(1)} (\partial_{x_n} u) &= - \left(\partial_{y_n} \widehat{\Pi}_j^{(1)} \right) u, \\ \widehat{\Pi}^{(2)}(\xi') (\partial_{x_n} u) &= - \left(\partial_{y_n} \widehat{\Pi}^{(2)}(\xi') \right) u. \end{aligned}$$

Proposition 5.1 (ii) now follows from Lemma 5.4, Theorems 5.5 and 5.6 in the following way.

By Lemma 5.4, $U_0(t)u_0$ is written as

$$U_0(t)u_0 = \mathcal{F}^{-1} \left(\frac{1}{2\pi i} \int_{\Gamma} e^{\lambda t} \chi^{(0)}(\xi') (\lambda + \widehat{L}_{\xi'})^{-1} d\lambda \right),$$

where $\Gamma = \{\lambda = \eta + se^{\pm i\theta}; s \geq 0\}$ with some $\eta > 0$ and $\theta \in (\frac{\pi}{2}, \pi)$.

By Lemma 5.4 and Theorem 5.5, we can deform the contour Γ into $\Gamma_0 \cup \widetilde{\Gamma}$ and a suitable circle around 0, where

$$\Gamma_0 = \{\lambda = -\eta_0 + is; |s| \leq s_0\}, \quad \widetilde{\Gamma} = \{\lambda = \eta + se^{\pm i\theta}; s \geq \widetilde{s}_0\}.$$

Here we choose positive numbers s_0 and \widetilde{s}_0 so that Γ_0 connects with $\widetilde{\Gamma}$ at the end points of Γ_0 . It then follows from Theorems 5.5, 5.6 and the residue theorem that $U_0(t)u_0$ is written as

$$U_0(t)u_0 = \mathcal{W}^{(0)}(t)u_0 + \mathcal{R}^{(0)}(t)u_0,$$

where

$$\mathcal{U}^{(0)}(t)u_0 = \mathcal{F}^{-1} \left(\chi^{(0)} e^{\lambda_0(\xi')t} \widehat{\Pi}(\xi') \widehat{u}_0 \right)$$

and

$$\mathcal{R}^{(0)}(t)u_0 = \mathcal{F}^{-1} \left(\frac{1}{2\pi i} \int_{\Gamma_0 \cup \tilde{\Gamma}} e^{\lambda t} \chi^{(0)} (\lambda + \widehat{L}_{\xi'})^{-1} \widehat{u}_0 d\lambda \right).$$

We further write $\mathcal{U}^{(0)}(t)u_0$ as

$$\begin{aligned} \mathcal{U}^{(0)}(t)u_0 &= G_t *_{x'} \Pi^{(0)}u_0 + \mathcal{U}_1^{(0)}(t)u_0 + \mathcal{U}_2^{(0)}(t)u_0 \\ &\quad + \mathcal{U}_3^{(0)}(t)u_0 + \mathcal{U}_4^{(0)}(t)u_0, \end{aligned}$$

where

$$G_t *_{x'} \Pi^{(0)}u_0 = \mathcal{F}^{-1} \left(e^{-(i\kappa_0\xi_1 + \kappa_1\xi_1^2 + \kappa_2|\xi''|^2)t} \widehat{\Pi}^{(0)} \widehat{u}_0 \right),$$

$$\mathcal{U}_1^{(0)}(t)u_0$$

$$= \mathcal{F}^{-1} \left((\chi^{(0)} - 1) e^{-(i\kappa_0\xi_1 + \kappa_1\xi_1^2 + \kappa_2|\xi''|^2)t} \widehat{\Pi}^{(0)} \widehat{u}_0 \right),$$

$$\mathcal{U}_2^{(0)}(t)u_0 = \mathcal{F}^{-1} \left(\chi^{(0)} e^{-(i\kappa_0\xi_1 + \kappa_1\xi_1^2 + \kappa_2|\xi''|^2)t} \widehat{\Pi}^{(1)}(\xi') \widehat{u}_0 \right),$$

$$\mathcal{U}_3^{(0)}(t)u_0 = \mathcal{F}^{-1} \left(\chi^{(0)} e^{-(i\kappa_0\xi_1 + \kappa_1\xi_1^2 + \kappa_2|\xi''|^2)t} \widehat{\Pi}^{(2)}(\xi') \widehat{u}_0 \right)$$

and

$$\mathcal{U}_4^{(0)}(t)u_0$$

$$= \mathcal{F}^{-1} \left(\chi^{(0)} (e^{\lambda_0(\xi')t} - e^{-(i\kappa_0\xi_1 + \kappa_1\xi_1^2 + \kappa_2|\xi''|^2)t}) \widehat{\Pi}(\xi') \widehat{u}_0 \right)$$

with

$$\widehat{\Pi}^{(1)}(\xi') = \sum_{j=1}^{n-1} \xi_j \widehat{\Pi}_j^{(1)}.$$

The desired estimates for $\mathcal{U}^{(0)}(t)u_0$ and $\mathcal{R}^{(0)}(t)u_0$ now follow from Lemma 5.4, Theorems 5.5 and 5.6.

Acknowledgments. This work was partially supported by Grant-in Aid for Scientific Research (B) No.19340033 from the Japan Society for the Promotion of Science.

References

- [1] T. Abe and Y. Shibata, On a resolvent estimate of the Stokes equation on an infinite layer, *J. Math. Soc. Japan*, **55** (2003), pp. 469–497.
- [2] T. Abe and Y. Shibata, On a resolvent estimate of the Stokes equation on an infinite layer part 2, $\lambda = 0$ case, *J. Math. Fluid Mech.*, **5** (2003), pp. 245–274.
- [3] H. Abels and M. Wiegner, Resolvent estimates for the Stokes operator on an infinite layer, *Differential and Integral Equations*, **18** (2005), pp. 1081–1110.
- [4] H. Fujita and T. Kato, On the Navier-Stokes initial value problem. I, *Arch. Rational Mech. Anal.*, **16** (1964), pp. 269–315.
- [5] Y. Giga and T. Miyakawa, Solutions in L_r of the Navier-Stokes initial value problem, *Arch. Rational Mech. Anal.*, **89** (1985), pp. 267–281.
- [6] H. Heck, H. Kim and H. Kozono, Stability of plane Couette flows with respect to small periodic perturbations, *Nonlinear Anal.*, **71** (2009), pp. 3739–3758.
- [7] D. Hoff and K. Zumbrun, Multi-dimensional diffusion waves for the Navier-Stokes equations of compressible flow, *Indiana Univ. Math. J.*, **44** (1995), pp. 604–676.
- [8] Y. Kagei, Resolvent estimates for the linearized compressible Navier-Stokes equation in an infinite layer, *Funkcial. Ekvac.*, **50** (2007), pp. 287–337.
- [9] Y. Kagei, Asymptotic behavior of the semigroup associated with the linearized compressible Navier-Stokes equation in an infinite layer, *Publ. Res. Inst. Math. Sci.*, **43** (2007), pp. 763–794.
- [10] Y. Kagei, Large time behavior of solutions to the compressible Navier-Stokes equation in an infinite layer, *Hiroshima Math. J.*, **38** (2008), pp. 95–124.
- [11] Y. Kagei, Asymptotic behavior of solutions of the compressible Navier-Stokes equation around the plane Couette flow, *MI Preprint Series 2009-7*, Kyushu University, accepted for publication in *J. Math. Fluid Mech.*, 2009.

- [12] Y. Kagei, and T. Kobayashi, Asymptotic behavior of solutions to the compressible Navier-Stokes equations on the half space, *Arch. Rational Mech. Anal.*, **177** (2005), pp. 231–330.
- [13] Y. Kagei and T. Nukumizu, Asymptotic behavior of solutions to the compressible Navier-Stokes equation in a cylindrical domain, *Osaka J. Math.*, **45** (2008), pp. 987–1026.
- [14] T. Kato, *Perturbation Theory for Linear Operators*, Springer-Verlag, Berlin, Heidelberg, New York (1980).
- [15] S. Kawashima., Systems of a hyperbolic-parabolic composite type, with applications to the equations of magnetohydrodynamics, Ph. D. Thesis, Kyoto University (1983).
- [16] S. Kawashima, A. Matsumura and T. Nishida, On the fluid-dynamical approximation to the Boltzmann equation at the level of the Navier-Stokes equation, *Commun. Math. Phys.*, **70** (1979), pp. 97–124.
- [17] K. Kirchgässner and H. Kielhöfer, Stability and bifurcation in fluid dynamics, Rocky Mountain Consortium Symposium on Nonlinear Eigenvalue Problems (Santa Fe, N.M., 1971), *Rocky Mountain J. Math.*, **3** (1973), pp. 275–318.
- [18] T. Kobayashi, Some estimates of solutions for the equations of motion of compressible viscous fluid in an exterior domain in \mathbf{R}^3 , *J. Differential Equations*, **184** (2002), pp. 587–619.
- [19] T. Kobayashi and Y. Shibata, Decay estimates of solutions for the equations of motion of compressible viscous and heat-conductive gases in an exterior domain in \mathbf{R}^3 , *Commun. Math. Phys.*, **200** (1999), pp. 621–659.
- [20] T. Kobayashi and Y. Shibata, Remarks on the rate of decay of solutions to linearized compressible Navier-Stokes equations, *Pacific J. Math.*, **207** (2002), pp. 199–234.
- [21] A. Matsumura and T. Nishida, The initial value problem for the equations of motion of compressible viscous and heat-conductive fluids, *Proc. Japan Acad. Ser. A*, **55** (1979), pp. 337–342.
- [22] A. Matsumura and T. Nishida, Initial boundary value problems for the equations of motion of compressible viscous and heat-conductive fluids, *Commun. Math. Phys.*, **89** (1983), pp. 445–464.

- [23] V.A. Romanov, Stability of plane-parallel Couette flow, *Functional Anal. Appl.*, **7** (1973), pp. 137–146.
- [24] R. Temam, *Navier-Stokes equations. Theory and numerical analysis*, Reprint of the 1984 edition, AMS Chelsea Publishing, Providence, RI, 2001.

List of MI Preprint Series, Kyushu University

The Global COE Program
Math-for-Industry Education & Research Hub

MI

- MI2008-1 Takahiro ITO, Shuichi INOKUCHI & Yoshihiro MIZOGUCHI
Abstract collision systems simulated by cellular automata
- MI2008-2 Eiji ONODERA
The initial value problem for a third-order dispersive flow into compact almost Hermitian manifolds
- MI2008-3 Hiroaki KIDO
On isosceles sets in the 4-dimensional Euclidean space
- MI2008-4 Hirofumi NOTSU
Numerical computations of cavity flow problems by a pressure stabilized characteristic-curve finite element scheme
- MI2008-5 Yoshiyasu OZEKI
Torsion points of abelian varieties with values in infinite extensions over a p -adic field
- MI2008-6 Yoshiyuki TOMIYAMA
Lifting Galois representations over arbitrary number fields
- MI2008-7 Takehiro HIROTSU & Setsuo TANIGUCHI
The random walk model revisited
- MI2008-8 Silvia GANDY, Masaaki KANNO, Hirokazu ANAI & Kazuhiro YOKOYAMA
Optimizing a particular real root of a polynomial by a special cylindrical algebraic decomposition
- MI2008-9 Kazufumi KIMOTO, Sho MATSUMOTO & Masato WAKAYAMA
Alpha-determinant cyclic modules and Jacobi polynomials

- MI2008-10 Sangyeol LEE & Hiroki MASUDA
Jarque-Bera Normality Test for the Driving Lévy Process of a Discretely Observed Univariate SDE
- MI2008-11 Hiroyuki CHIHARA & Eiji ONODERA
A third order dispersive flow for closed curves into almost Hermitian manifolds
- MI2008-12 Takehiko KINOSHITA, Kouji HASHIMOTO and Mitsuhiro T. NAKAO
On the L^2 a priori error estimates to the finite element solution of elliptic problems with singular adjoint operator
- MI2008-13 Jacques FARAUT and Masato WAKAYAMA
Hermitian symmetric spaces of tube type and multivariate Meixner-Pollaczek polynomials
- MI2008-14 Takashi NAKAMURA
Riemann zeta-values, Euler polynomials and the best constant of Sobolev inequality
- MI2008-15 Takashi NAKAMURA
Some topics related to Hurwitz-Lerch zeta functions
- MI2009-1 Yasuhide FUKUMOTO
Global time evolution of viscous vortex rings
- MI2009-2 Hidetoshi MATSUI & Sadanori KONISHI
Regularized functional regression modeling for functional response and predictors
- MI2009-3 Hidetoshi MATSUI & Sadanori KONISHI
Variable selection for functional regression model via the L_1 regularization
- MI2009-4 Shuichi KAWANO & Sadanori KONISHI
Nonlinear logistic discrimination via regularized Gaussian basis expansions
- MI2009-5 Toshiro HIRANOUCI & Yuichiro TAGUCHI
Flat modules and Groebner bases over truncated discrete valuation rings

- MI2009-6 Kenji KAJIWARA & Yasuhiro OHTA
Bilinearization and Casorati determinant solutions to non-autonomous 1+1 dimensional discrete soliton equations
- MI2009-7 Yoshiyuki KAGEI
Asymptotic behavior of solutions of the compressible Navier-Stokes equation around the plane Couette flow
- MI2009-8 Shohei TATEISHI, Hidetoshi MATSUI & Sadanori KONISHI
Nonlinear regression modeling via the lasso-type regularization
- MI2009-9 Takeshi TAKAISHI & Masato KIMURA
Phase field model for mode III crack growth in two dimensional elasticity
- MI2009-10 Shingo SAITO
Generalisation of Mack's formula for claims reserving with arbitrary exponents for the variance assumption
- MI2009-11 Kenji KAJIWARA, Masanobu KANEKO, Atsushi NOBE & Teruhisa TSUDA
Ultradiscretization of a solvable two-dimensional chaotic map associated with the Hesse cubic curve
- MI2009-12 Tetsu MASUDA
Hypergeometric q -functions of the q -Painlevé system of type $E_8^{(1)}$
- MI2009-13 Hidenao IWANE, Hitoshi YANAMI, Hirokazu ANAI & Kazuhiro YOKOYAMA
A Practical Implementation of a Symbolic-Numeric Cylindrical Algebraic Decomposition for Quantifier Elimination
- MI2009-14 Yasunori MAEKAWA
On Gaussian decay estimates of solutions to some linear elliptic equations and its applications
- MI2009-15 Yuya ISHIHARA & Yoshiyuki KAGEI
Large time behavior of the semigroup on L^p spaces associated with the linearized compressible Navier-Stokes equation in a cylindrical domain

- MI2009-16 Chikashi ARITA, Atsuo KUNIBA, Kazumitsu SAKAI & Tsuyoshi SAWABE
Spectrum in multi-species asymmetric simple exclusion process on a ring
- MI2009-17 Masato WAKAYAMA & Keitaro YAMAMOTO
Non-linear algebraic differential equations satisfied by certain family of elliptic functions
- MI2009-18 Me Me NAING & Yasuhide FUKUMOTO
Local Instability of an Elliptical Flow Subjected to a Coriolis Force
- MI2009-19 Mitsunori KAYANO & Sadanori KONISHI
Sparse functional principal component analysis via regularized basis expansions and its application
- MI2009-20 Shuichi KAWANO & Sadanori KONISHI
Semi-supervised logistic discrimination via regularized Gaussian basis expansions
- MI2009-21 Hiroshi YOSHIDA, Yoshihiro MIWA & Masanobu KANEKO
Elliptic curves and Fibonacci numbers arising from Lindenmayer system with symbolic computations
- MI2009-22 Eiji ONODERA
A remark on the global existence of a third order dispersive flow into locally Hermitian symmetric spaces
- MI2009-23 Stjepan LUGOMER & Yasuhide FUKUMOTO
Generation of ribbons, helicoids and complex scherk surface in laser-matter Interactions
- MI2009-24 Yu KAWAKAMI
Recent progress in value distribution of the hyperbolic Gauss map
- MI2009-25 Takehiko KINOSHITA & Mitsuhiro T. NAKAO
On very accurate enclosure of the optimal constant in the a priori error estimates for H_0^2 -projection

- MI2009-26 Manabu YOSHIDA
Ramification of local fields and Fontaine's property (Pm)
- MI2009-27 Yu KAWAKAMI
Value distribution of the hyperbolic Gauss maps for flat fronts in hyperbolic three-space
- MI2009-28 Masahisa TABATA
Numerical simulation of fluid movement in an hourglass by an energy-stable finite element scheme
- MI2009-29 Yoshiyuki KAGEI & Yasunori MAEKAWA
Asymptotic behaviors of solutions to evolution equations in the presence of translation and scaling invariance
- MI2009-30 Yoshiyuki KAGEI & Yasunori MAEKAWA
On asymptotic behaviors of solutions to parabolic systems modelling chemotaxis
- MI2009-31 Masato WAKAYAMA & Yoshinori YAMASAKI
Hecke's zeros and higher depth determinants
- MI2009-32 Olivier PIRONNEAU & Masahisa TABATA
Stability and convergence of a Galerkin-characteristics finite element scheme of lumped mass type
- MI2009-33 Chikashi ARITA
Queueing process with excluded-volume effect
- MI2009-34 Kenji KAJIWARA, Nobutaka NAKAZONO & Teruhisa TSUDA
Projective reduction of the discrete Painlevé system of type $(A_2 + A_1)^{(1)}$
- MI2009-35 Yosuke MIZUYAMA, Takamasa SHINDE, Masahisa TABATA & Daisuke TAGAMI
Finite element computation for scattering problems of micro-hologram using DtN map

- MI2009-36 Reiichiro KAWAI & Hiroki MASUDA
Exact simulation of finite variation tempered stable Ornstein-Uhlenbeck processes
- MI2009-37 Hiroki MASUDA
On statistical aspects in calibrating a geometric skewed stable asset price model
- MI2010-1 Hiroki MASUDA
Approximate self-weighted LAD estimation of discretely observed ergodic Ornstein-Uhlenbeck processes
- MI2010-2 Reiichiro KAWAI & Hiroki MASUDA
Infinite variation tempered stable Ornstein-Uhlenbeck processes with discrete observations
- MI2010-3 Kei HIROSE, Shuichi KAWANO, Daisuke MIIKE & Sadanori KONISHI
Hyper-parameter selection in Bayesian structural equation models
- MI2010-4 Nobuyuki IKEDA & Setsuo TANIGUCHI
The Itô-Nisio theorem, quadratic Wiener functionals, and 1-solitons
- MI2010-5 Shohei TATEISHI & Sadanori KONISHI
Nonlinear regression modeling and detecting change point via the relevance vector machine
- MI2010-6 Shuichi KAWANO, Toshihiro MISUMI & Sadanori KONISHI
Semi-supervised logistic discrimination via graph-based regularization
- MI2010-7 Teruhisa TSUDA
UC hierarchy and monodromy preserving deformation
- MI2010-8 Takahiro ITO
Abstract collision systems on groups
- MI2010-9 Hiroshi YOSHIDA, Kinji KIMURA, Naoki YOSHIDA, Junko TANAKA & Yoshihiro MIWA
An algebraic approach to underdetermined experiments

MI2010-10 Kei HIROSE & Sadanori KONISHI
Variable selection via the grouped weighted lasso for factor analysis models

MI2010-11 Katsusuke NABESHIMA & Hiroshi YOSHIDA
Derivation of specific conditions with Comprehensive Groebner Systems

MI2010-12 Yoshiyuki KAGEI, Yu NAGAFUCHI & Takeshi SUDOU
Decay estimates on solutions of the linearized compressible Navier-Stokes equation around a Poiseuille type flow